

bs-25849R**[Primary Antibody]****CD86 Rabbit pAb****Bioss**
ANTIBODIES

www.bioss.com.cn

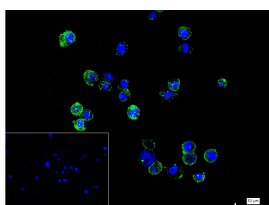
sales@bioss.com.cn

techsupport@bioss.com.cn

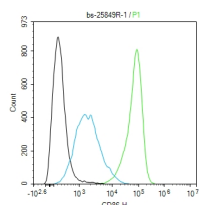
400-901-9800

— DATASHEET —

Host: Rabbit	Isotype: IgG	Applications: Flow-Cyt (1µg/Test) ICC/IF (1:50-200)
Clonality: Polyclonal		Reactivity: Human
GeneID: 942	SWISS: P42081	
Target: CD86		
Immunogen: KLH conjugated synthetic peptide derived from the human CD86: 191-290/329.		
Purification: affinity purified by Protein A		
Concentration: 1mg/ml		
Storage: 0.01M TBS (pH7.4) with 1% BSA, 0.02% Proclin300 and 50% Glycerol. Shipped at 4°C. Store at -20°C for one year. Avoid repeated freeze/thaw cycles.		
Background: This gene encodes a type I membrane protein that is a member of the immunoglobulin superfamily. This protein is expressed by antigen-presenting cells, and it is the ligand for two proteins at the cell surface of T cells, CD28 antigen and cytotoxic T-lymphocyte-associated protein 4. Binding of this protein with CD28 antigen is a costimulatory signal for activation of the T-cell. Binding of this protein with cytotoxic T-lymphocyte-associated protein 4 negatively regulates T-cell activation and diminishes the immune response. Alternative splicing results in several transcript variants encoding different isoforms.[provided by RefSeq, May 2011].		Predicted MW.: 31 kDa Subcellular Location: Cell membrane

— VALIDATION IMAGES —

4% Paraformaldehyde-fixed Raji (H) cell;
Antibody incubation with (CD86) polyclonal
Antibody, unconjugated (bs-25849R) 1:100, 90
min at 37°C; followed by conjugated Goat Anti-
Rabbit IgG antibody (green, bs-60295G-BF488) at
37°C for 90 min, DAPI (blue, C02-04002) was used
to stain the cell nuclei. PBS instead of the
primary antibody was used as the blank control.



The Raji (H) cells were incubated in 5%BSA to
block non-specific protein-protein interactions
(30 min at r.t.). Primary Antibody (green): Rabbit
Anti-CD86 antibody (bs-25849R): 1 µg/10⁶ cells;
Secondary Antibody (white blue): Goat anti-
Rabbit IgG-BF488 (bs-60295G-BF488): 1 µg/test.
Isotype Control (orange): Rabbit IgG (bs-0295P).
Blank control (black): PBS. Acquisition of 20,000
events was performed.