

CTGF Rabbit pAb

Catalog Number: bs-22361R

Target Protein: CTGF

Concentration: 1mg/ml

Form: Liquid

Host: Rabbit

Clonality: Polyclonal

Isotype: IgG

Applications: WB (1:500-2000)

Reactivity: Mouse, Rat (predicted:Rabbit, Pig, Chicken, Dog)

Predicted MW: 36 kDa

Entrez Gene: 1490

Swiss Prot: P29279

Source: KLH conjugated synthetic peptide derived from human CTGF: 27-120/349.

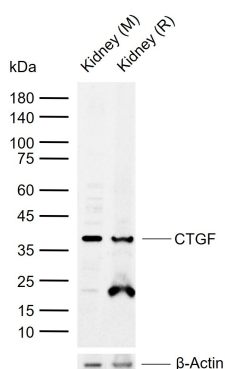
Purification: affinity purified by Protein A

Storage: 0.01M TBS (pH7.4) with 1% BSA, 0.02% Proclin300 and 50% Glycerol.

Shipped at 4°C. Store at -20°C for one year. Avoid repeated freeze/thaw cycles.

Background: The protein encoded by this gene is a mitogen that is secreted by vascular endothelial cells. The encoded protein plays a role in chondrocyte proliferation and differentiation, cell adhesion in many cell types, and is related to platelet-derived growth factor. Certain polymorphisms in this gene have been linked with a higher incidence of systemic sclerosis. [provided by RefSeq, Nov 2009].

VALIDATION IMAGES



Sample: Lane 1: Mouse Kidney tissue lysates Lane 2: Rat Kidney tissue lysates Primary: Anti-CTGF (bs-22361R) at 1/1000 dilution Secondary: IRDye800CW Goat Anti-Rabbit IgG at 1/20000 dilution Predicted band size: 36 kDa Observed band size: 38 kDa

PRODUCT SPECIFIC PUBLICATIONS

[IF=4.23] Zhu, Boqian. et al. Protective effect of rosuvastatin against the formation of benign esophageal stricture. 2021 Nov 20 IHC ;
Rabbit . 34800196