

bs-20015R**[Primary Antibody]****BioSS**
ANTIBODIES

www.bioss.com.cn

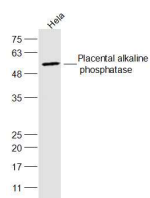
sales@bioss.com.cn

techsupport@bioss.com.cn

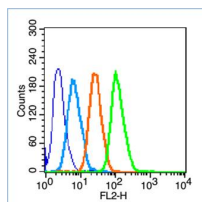
400-901-9800

Placental alkaline phosphatase (PLAP) Rabbit pAb**— DATASHEET —**

Host: Rabbit	Isotype: IgG	Applications: WB (1:500-2000) Flow-Cyt (1µg/Test)
Clonality: Polyclonal		Reactivity: Human, Mouse
GeneID: 250	SWISS: P05187	
Target: Placental alkaline phosphatase (PLAP)		
Immunogen: KLH conjugated synthetic peptide derived from human Placental alkaline phosphatase 1: 41-140/535.		
Purification: affinity purified by Protein A		
Concentration: 1mg/ml		
Storage: 0.01M TBS (pH7.4) with 1% BSA, 0.02% Proclin300 and 50% Glycerol. Shipped at 4°C. Store at -20°C for one year. Avoid repeated freeze/thaw cycles.		
Background: There are at least four distinct but related alkaline phosphatases: intestinal, placental, placental-like, and liver/bone/kidney (tissue non-specific). The first three are located together on chromosome 2 while the tissue non-specific form is located on chromosome 1. The product of this gene is a membrane bound glycosylated enzyme, also referred to as the heat stable form, that is expressed primarily in the placenta although it is closely related to the intestinal form of the enzyme as well as to the placental-like form. The coding sequence for this form of alkaline phosphatase is unique in that the 3' untranslated region contains multiple copies of an Alu family repeat. In addition, this gene is polymorphic and three common alleles (type 1, type 2 and type 3) for this form of alkaline phosphatase have been well characterized. [provided by RefSeq, Jul 2008]		
		Predicted MW.: 53 kDa
		Subcellular Location: Cell membrane

— VALIDATION IMAGES —

Sample: HeLa(Human) Cell Lysate at 30 ug
Primary: Anti-Placental alkaline phosphatase (bs-20015R) at 1/300 dilution Secondary: IRDye800CW Goat Anti-Rabbit IgG at 1/20000 dilution Predicted band size: 53 kD Observed band size: 53 kD



Blank control (blue line): Hep G2(fixed with 70% ethanol Overnight at 4°C). Primary Antibody (green line): Rabbit Anti-Placental alkaline phosphatase antibody (bs-20015R), Dilution: 1µg /10⁶ cells; Isotype Control Antibody (orange line): Rabbit IgG . Secondary Antibody (white blue line): Goat anti-rabbit IgG-PE, Dilution: 1µg /test.