

**bs-20013R**

**[ Primary Antibody ]**

## ALPI Rabbit pAb

**Bioss**  
ANTIBODIES

www.bioss.com.cn

sales@bioss.com.cn

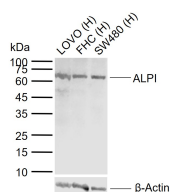
techsupport@bioss.com.cn

400-901-9800

### DATASHEET

<b>Host:</b> Rabbit	<b>Isotype:</b> IgG	<b>Applications:</b> WB (1:500-2000)
<b>Clonality:</b> Polyclonal		<b>Reactivity:</b> Human
<b>GeneID:</b> 248	<b>SWISS:</b> P09923	
<b>Target:</b> ALPI		
<b>Immunogen:</b> KLH conjugated synthetic peptide derived from human ALPI: 351-450/528.		<b>Predicted MW.:</b> 53 kDa
<b>Purification:</b> affinity purified by Protein A		<b>Subcellular Location:</b> Cell membrane
<b>Concentration:</b> 1mg/ml		
<b>Storage:</b> 0.01M TBS (pH7.4) with 1% BSA, 0.02% Proclin300 and 50% Glycerol. Shipped at 4°C. Store at -20°C for one year. Avoid repeated freeze/thaw cycles.		
<b>Background:</b> There are at least four distinct but related alkaline phosphatases: intestinal, placental, placental-like, and liver/bone/kidney (tissue non-specific). The intestinal alkaline phosphatase gene encodes a digestive brush-border enzyme. This enzyme is upregulated during small intestinal epithelial cell differentiation. [provided by RefSeq, Jul 2008]		

### VALIDATION IMAGES



Sample: Lane 1: Human LOVO cell lysates Lane 2: Human FHC cell lysates Lane 3: Human SW480 cell lysates  
Primary: Anti-ALPI (bs-20013R) at 1/1000 dilution Secondary: IRDye800CW Goat Anti-Rabbit IgG at 1/20000 dilution  
Predicted band size: 53 kDa Observed band size: 65 kDa