

bs-0811R**[Primary Antibody]****Bioss**
ANTIBODIES

www.bioss.com.cn

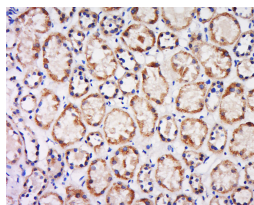
sales@bioss.com.cn

techsupport@bioss.com.cn

400-901-9800

CX3CL1 Rabbit pAb**DATASHEET**

| | | |
|---|----------------------|---|
| Host: Rabbit | Isotype: IgG | Applications: IHC-P (1:100-500) IHC-F (1:100-500) IF (1:100-500) Reactivity: Human (predicted: Mouse, Rat) Predicted MW.: 41 kDa Subcellular Location: Secreted ,Cell membrane |
| Clonality: Polyclonal | | |
| GeneID: 6376 | SWISS: P78423 | |
| Target: CX3CL1 | | |
| Immunogen: KLH conjugated synthetic peptide derived from human CX3CL1: 301-397/397. < Extracellular > | | |
| Purification: affinity purified by Protein A | | |
| Concentration: 1mg/ml | | |
| Storage: 0.01M TBS (pH7.4) with 1% BSA, 0.02% Proclin300 and 50% Glycerol. Shipped at 4°C. Store at -20°C for one year. Avoid repeated freeze/thaw cycles. | | |
| Background: CX3CL1 is a member of the delta chemokine subfamily that contains a unique CX3C cysteine motif near the N-terminal. Unlike other known chemokines, it is a type 1 membrane protein containing a chemokine domain tethered on a long mucin-like stalk. CX3CL1, a leukocyte chemoattractant, is expressed in various tissues including the brain, heart, lung, kidney, skeletal muscle, and testis. The expression is reported to be up-regulated in endothelial cells and microglia by inflammatory signals. CX3CR1, a specific receptor for fractalkine, mediates both leukocyte migration and adhesion. | | |

VALIDATION IMAGES

Tissue/cell: human kidney tissue; 4% Paraformaldehyde-fixed and paraffin-embedded; Antigen retrieval: citrate buffer (0.01M, pH 6.0), Boiling bathing for 15min; Block endogenous peroxidase by 3% Hydrogen peroxide for 30min; Blocking buffer (normal goat serum,C-0005) at 37°C for 20 min; Incubation: Anti-CX3CL1 Polyclonal Antibody, Unconjugated(bs-0811R) 1:500, overnight at 4°C, followed by conjugation to the secondary antibody(SP-0023) and DAB(C-0010) staining

SELECTED CITATIONS

- **[IF=10.392]** Wenlong Zhang. et al. Crosstalk between IL-15Rα+ tumor-associated macrophages and breast cancer cells reduces CD8+ T cell recruitment. CANCER COMMUN. 2022 May 25 WB ;Mouse. 35615815
- **[IF=7.2]** Jin Su. et al. Lactate/GPR81 recruits regulatory T cells by modulating CX3CL1 to promote immune resistance in a highly glycolytic gastric cancer. ONCOIMMUNOLOGY. 2024 Feb 26 WB,IHC,IF ;Human,Mouse. 38419759
- **[IF=5.534]** Zhang J et al. Dynamic changes of CX3CL1/CX3CR1 axis during microglial activation and motor neuron loss in

Important Note: This product as supplied is intended for research use only, not for use in human, therapeutic or diagnostic applications.

- the spinal cord of ALS mouse model. *Transl Neurodegener.* 2018 Dec 21;7:35. WB ;Mouse. 30607245
- **[IF=6]** Qiaowei Xie. et al. Effects of Antiretroviral Treatment on Central and Peripheral Immune Response in Mice with EcoHIV Infection. *CELLS-BASEL.* 2024 Jan;13(10):882 WB ;Mouse. 38786105
 - **[IF=4.8]** Yigang Lv. et al.CX3CL1-mediated neuronal "rescue signal" influences inflammation progression following spinal cord injury via microglia..*International Immunopharmacology.*2025 Mar 17:153:114478. Western blot ;Mouse. 40101419