

bs-12617R

[Primary Antibody]

PEPP2 Rabbit pAb

BioSS
ANTIBODIES

www.bioss.com.cn

sales@bioss.com.cn

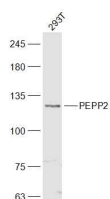
techsupport@bioss.com.cn

400-901-9800

— DATASHEET —

Host: Rabbit	Isotype: IgG	Applications: WB (1:500-2000)
Clonality: Polyclonal		
GeneID: 54477	SWISS: Q9HAU0	
Target: PEPP2		
Immunogen: KLH conjugated synthetic peptide derived from human PEPP2: 251-350/1116.		
Purification: affinity purified by Protein A		Reactivity: Human
Concentration: 1mg/ml		
Storage: 0.01M TBS (pH7.4) with 1% BSA, 0.02% Proclin300 and 50% Glycerol. Shipped at 4°C. Store at -20°C for one year. Avoid repeated freeze/thaw cycles.		Predicted MW.: 127 kDa
Background: This gene, which encodes a transcriptional repressor, is one of two paralogous X-linked homeobox-containing genes and is highly expressed in a variety of cancers. In addition, the encoded protein associates with the cell membrane and with microtubules, and is concentrated at the leading edge of migratory cells. [provided by RefSeq, Dec 2015]		Subcellular Location: Cytoplasm

— VALIDATION IMAGES —



Sample: 293T(Human) Cell Lysate at 30 ug
Primary: Anti-PEPP2 (bs-12617R) at 1/300
dilution Secondary: IRDye800CW Goat Anti-
Rabbit IgG at 1/20000 dilution Predicted band
size: 127 kD Observed band size: 127 kD