

bs-12615R**[Primary Antibody]****BioSS**
ANTIBODIES

www.bioss.com.cn

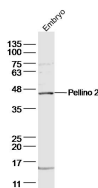
sales@bioss.com.cn

techsupport@bioss.com.cn

400-901-9800

Pellino 2 Rabbit pAb**— DATASHEET —**

Host: Rabbit	Isotype: IgG	Applications: WB (1:500-2000)
Clonality: Polyclonal		Reactivity: Mouse (predicted: Human, Pig, Sheep, Cow, Chicken, Horse)
GeneID: 57161	SWISS: Q9HAT8	
Target: Pellino 2		Predicted MW.: 46 kDa
Immunogen: KLH conjugated synthetic peptide derived from human Pellino 2: 301-400/420.		Subcellular Location: Nucleus
Purification: affinity purified by Protein A		
Concentration: 1mg/ml		
Storage: 0.01M TBS (pH7.4) with 1% BSA, 0.02% Proclin300 and 50% Glycerol. Shipped at 4°C. Store at -20°C for one year. Avoid repeated freeze/thaw cycles.		
Background: Scaffold protein which probably links Toll like receptors (TLRs) to basic cellular processes via its interaction with the complex containing IRAK (IL1R associated kinase) kinases and TRAF6. Can activate the MAP (mitogen activated protein) kinase pathway leading to activation of ELK1. Not required for NF-kappa-B activation.		

— VALIDATION IMAGES —

Sample: Embryo (mouse) Lysate at 40 ug
Primary: Anti-Pellino2 (bs-12615R) at 1/300
dilution Secondary: IRDye800CW Goat Anti-
Rabbit IgG at 1/20000 dilution Predicted band
size: 46 kD Observed band size: 46 kD