

**bs-12773R****[ Primary Antibody ]****VPS36 Rabbit pAb****BioSS**  
**ANTIBODIES**

www.bioss.com.cn

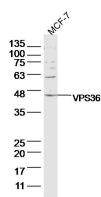
sales@bioss.com.cn

techsupport@bioss.com.cn

400-901-9800

**— DATASHEET —**

<b>Host:</b> Rabbit	<b>Isotype:</b> IgG	<b>Applications:</b> WB (1:500-2000)
<b>Clonality:</b> Polyclonal		<b>Reactivity:</b> Human (predicted: Mouse, Rat, Rabbit, Pig, Sheep, Cow, Zebrafish, Chicken, Dog, Horse)
<b>GeneID:</b> 51028	<b>SWISS:</b> Q86VN1	<b>Predicted MW.:</b> 44 kDa
<b>Target:</b> VPS36		<b>Subcellular Location:</b> Cell membrane ,Cytoplasm ,Nucleus
<b>Immunogen:</b> KLH conjugated synthetic peptide derived from human VPS36: 111-210/386.		
<b>Purification:</b> affinity purified by Protein A		
<b>Concentration:</b> 1mg/ml		
<b>Storage:</b> 0.01M TBS (pH7.4) with 1% BSA, 0.02% Proclin300 and 50% Glycerol. Shipped at 4°C. Store at -20°C for one year. Avoid repeated freeze/thaw cycles.		
<b>Background:</b> This gene encodes a protein that is a subunit of the endosomal sorting complex required for transport II (ESCRT-II). This protein complex functions in sorting of ubiquitinated membrane proteins during endocytosis. A similar protein complex in rat is associated with RNA polymerase elongation factor II. [provided by RefSeq, Aug 2013]		

**— VALIDATION IMAGES —**

Sample: MCF-7 Cell (Human) Lysate at 40 ug  
Primary: Anti-VPS36 (bs-12773R) at 1/300  
dilution Secondary: IRDye800CW Goat Anti-  
Rabbit IgG at 1/20000 dilution Predicted band  
size: 44 kD Observed band size: 44 kD