

bsm-63320R**[Primary Antibody]****GCLM Recombinant Rabbit mAb****Bioss**
ANTIBODIES

www.bioss.com.cn

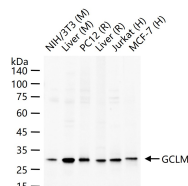
sales@bioss.com.cn

techsupport@bioss.com.cn

400-901-9800

— DATASHEET —

Host: Rabbit	Isotype: IgG	Applications: WB (1:500-2000) Reactivity: Human, Mouse, Rat Predicted MW.: 31 kDa Subcellular Location: Cytoplasm
Clonality: Recombinant	CloneNo.: 8F7	
GeneID: 2730	SWISS: P48507	
Target: GCLM		
Immunogen: A synthesized peptide derived from human GCLM: 65-100/274.		
Purification: affinity purified by Protein A		
Concentration: 1mg/ml		
Storage: 0.01M TBS (pH7.4) with 1% BSA, 0.02% Proclin300 and 50% Glycerol. Shipped at 4°C. Store at -20°C for one year. Avoid repeated freeze/thaw cycles.		
Background: Glutamate-cysteine ligase, also known as gamma-glutamylcysteine synthetase, is the first rate limiting enzyme of glutathione synthesis. The enzyme consists of two subunits, a heavy catalytic subunit and a light regulatory subunit. Gamma glutamylcysteine synthetase deficiency has been implicated in some forms of hemolytic anemia. Alternative splicing results in multiple transcript variants encoding different isoforms. [provided by RefSeq, Apr 2015]		

— VALIDATION IMAGES —

25 ug total protein per lane of various lysates (see on figure) probed with GCLM monoclonal antibody, unconjugated (bsm-63320R) at 1:1000 dilution and 4°C overnight incubation. Followed by conjugated secondary antibody incubation at r.t. for 60 min.