

beta-Amyloid(1-42) mAb

Catalog Number: bsm-41490M

Target Protein: beta-Amyloid(1-42)

Concentration: 1mg/ml

Form: Liquid

Clonality: Monoclonal

Clone No.: 3D12

Isotype: IgG2a

Applications: IHC-P (1:500-5000), IHC-F (1:500-5000), IF (1:200-5000)

Reactivity: Mouse (predicted:Human, Rat)

Predicted MW: 4.4 kDa

Entrez Gene: 351

Swiss Prot: P05067

Source: KLH conjugated synthetic peptide derived from human beta-Amyloid(1-42): 1-42/42.

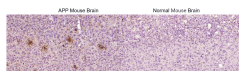
Purification: affinity purified by Protein A

Storage: 0.01M TBS (pH7.4) with 1% BSA, 0.02% Proclin300 and 50% Glycerol.

Shipped at 4°C. Store at -20°C for one year. Avoid repeated freeze/thaw cycles.

Background: The cerebral and vascular plaques associated with Alzheimer's disease are mainly composed of Amyloid beta peptides. beta Amyloid is derived from cleavage of the Amyloid precursor protein and varies in length from 39 to 43 amino acids. beta Amyloid [1-40], beta Amyloid [1-42], and beta Amyloid [1-43] peptides result from cleavage of Amyloid precursor protein after residues 40, 42, and 43, respectively. The cleavage takes place by gamma-secretase during the last Amyloid precursor protein processing step. beta Amyloid [1-40], beta Amyloid [1-42], and beta Amyloid [1-43] peptides are major constituents of the plaques and tangles that occur in Alzheimer's disease. beta Amyloid antibodies and peptides have been developed as tools for elucidating the biology of Alzheimer's disease.

VALIDATION IMAGES



Positive sample (left) : APP Mouse Brain Negative sample (right) : Normal Mouse Brain Block endogenous peroxidase by 3% hydrogen peroxide for 20 minutes; Blocking buffer (normal goat serum) at 37°C for 30min; Incubation with (beta-Amyloid(1-42)) Monoclonal Antibody, Unconjugated (bsm-41490M) at 1:2000 overnight at 4°C, followed by conjugation to the bs-40296G-HRP and DAB (C-0010) staining.