

## human IgG-Fc, RBITC conjugated

Catalog Number: bsm-0365M-RBITC

Target Protein: human IgG-Fc

Concentration: 1mg/ml

Host: Mouse

Clonality: Monoclonal

Isotype: IgG1

Applications: Excitation spectrum: 540nm

Emission spectrum: 625nm

Not yet tested in other applications.

Optimal working dilutions must be determined by the end user.

Reactivity: Human

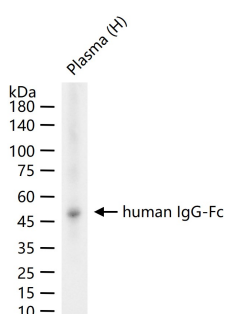
Purification: affinity purified by Protein A

Storage: 0.01M TBS(pH7.4) with 1% BSA, 0.03% Proclin300 and 50% Glycerol.

Shipped at 4°C. Store at -20°C for one year. Avoid repeated freeze/thaw cycles.

Background: The Fc region is the constant region on an immunoglobulin molecule, the area that is exactly the same on all antibodies. The Fc region is found on the heavy chains and is not involved in binding antigens.

### VALIDATION IMAGES



25 ug total protein per lane of various lysates (see on figure) probed with human IgG-Fc monoclonal antibody, unconjugated (bsm-0365M) at 1:1000 dilution and 4°C overnight incubation. Followed by conjugated secondary antibody incubation at r.t. for 60 min.