

bs-16163R**[Primary Antibody]****FOXD4L2 Rabbit pAb****BioSS**
ANTIBODIES

www.bioss.com.cn

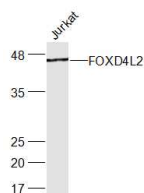
sales@bioss.com.cn

techsupport@bioss.com.cn

400-901-9800

— DATASHEET —

Host: Rabbit	Isotype: IgG	Applications: WB (1:500-2000)
Clonality: Polyclonal		Reactivity: Human
GeneID: 286380	SWISS: Q3SYB3	
Target: FOXD4L2		
Immunogen: KLH conjugated synthetic peptide derived from human FOXD4L2: 101-200/416.		Predicted MW.: 46 kDa
Purification: affinity purified by Protein A		Subcellular Location: Nucleus
Concentration: 1mg/ml		
Storage: 0.01M TBS (pH7.4) with 1% BSA, 0.02% Proclin300 and 50% Glycerol. Shipped at 4°C. Store at -20°C for one year. Avoid repeated freeze/thaw cycles.		
Background: This gene is a member of the forkhead/winged-helix (FOX) family of transcription factors that have highly conserved FOX DNA-binding domains. Members of the FOX family of transcription factors are regulators of embryogenesis and may play a role in human cancer.		

— VALIDATION IMAGES —

Sample: Jurkat(Human) Cell Lysate at 30 ug
Primary: Anti-FOXD4L2 (bs-16163R) at 1/300
dilution Secondary: IRDye800CW Goat Anti-
Rabbit IgG at 1/20000 dilution Predicted band
size: 46 kD Observed band size: 46 kD