

bs-25840R**[Primary Antibody]****CD56 Rabbit pAb****BioSS**
ANTIBODIES

www.bioss.com.cn

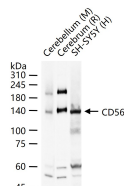
sales@bioss.com.cn

techsupport@bioss.com.cn

400-901-9800

— DATASHEET —

Host: Rabbit	Isotype: IgG	Applications: WB (1:500-2000)
Clonality: Polyclonal		Reactivity: Human, Mouse, Rat
GeneID: 4684	SWISS: P13591	
Target: CD56		
Immunogen: KLH conjugated synthetic peptide derived from human CD56: 800-851/851.		Predicted MW.: 92 kDa
Purification: affinity purified by Protein A		Subcellular Location: Secreted ,Cell membrane
Concentration: 1mg/ml		
Storage: Shipped at 4°C. Store at -20°C for one year. Avoid repeated freeze/thaw cycles.		
Background: This gene encodes a cell adhesion protein which is a member of the immunoglobulin superfamily. The encoded protein is involved in cell-to-cell interactions as well as cell-matrix interactions during development and differentiation. The encoded protein has been shown to be involved in development of the nervous system, and for cells involved in the expansion of T cells and dendritic cells which play an important role in immune surveillance. Alternative splicing results in multiple transcript variants. [provided by RefSeq, Jun 2011]		

— VALIDATION IMAGES —

25 ug total protein per lane of various lysates (see on figure) probed with CD56 polyclonal antibody, unconjugated (bs-25840R) at 1:1000 dilution and 4°C overnight incubation. Followed by conjugated secondary antibody incubation at r.t. for 60 min.