

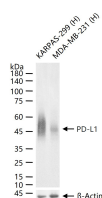
bsm-43073R**[Primary Antibody]****Bioss**
ANTIBODIES

www.bioss.com.cn

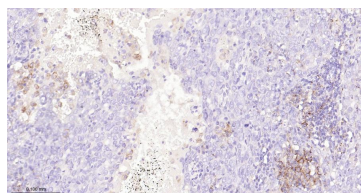
sales@bioss.com.cn

techsupport@bioss.com.cn

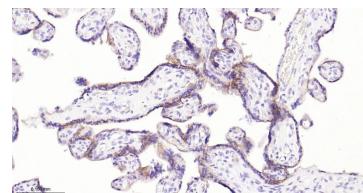
400-901-9800

PD-L1 Recombinant Rabbit mAb**— DATASHEET —****Host:** Rabbit**Clonality:** Recombinant**GeneID:** 29126**Target:** PD-L1**Immunogen:** Recombinant human PD-L1 protein: 15-239/290.**Purification:** affinity purified by Protein A**Concentration:** 1mg/ml**Storage:** 0.01M TBS (pH7.4) with 1% BSA, 0.02% Proclin300 and 50% Glycerol.
Shipped at 4°C. Store at -20°C for one year. Avoid repeated freeze/thaw cycles.**Background:** This gene encodes an immune inhibitory receptor ligand that is expressed by hematopoietic and non-hematopoietic cells, such as T cells and B cells and various types of tumor cells. The encoded protein is a type I transmembrane protein that has immunoglobulin V-like and C-like domains. Interaction of this ligand with its receptor inhibits T-cell activation and cytokine production. During infection or inflammation of normal tissue, this interaction is important for preventing autoimmunity by maintaining homeostasis of the immune response. In tumor microenvironments, this interaction provides an immune escape for tumor cells through cytotoxic T-cell inactivation. Expression of this gene in tumor cells is considered to be prognostic in many types of human malignancies, including colon cancer and renal cell carcinoma. Alternative splicing results in multiple transcript variants. [provided by RefSeq, Sep 2015]**Isotype:** IgG**CloneNo.:** 3F10**SWISS:** Q9NZQ7**Applications:** WB (1:500-2000)**IHC-P** (1:100-500)**IHC-F** (1:100-500)**IF** (1:100-500)**ICC/IF** (1:50-200)**Reactivity:** Human**Predicted**
MW.: 29 kDa**Subcellular** Secreted ,Extracellular
Location: matrix**— VALIDATION IMAGES —**

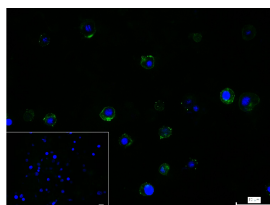
25 ug total protein per lane of various lysates (see on figure) probed with PD-L1 monoclonal antibody, unconjugated (bsm-43073R) at 1:1000 dilution and 4°C overnight incubation. Followed by conjugated secondary antibody incubation at r.t. for 60 min.



Paraformaldehyde-fixed, paraffin embedded Human Breast Cancer; Antigen retrieval by boiling in sodium citrate buffer (pH6.0) for 15 min; Antibody incubation with PD-L1 Monoclonal Antibody, Unconjugated(bsm-43073R) at 1:200 overnight at 4°C, followed by conjugation to the bs-0295G-HRP and DAB (C-0010) staining.



Paraformaldehyde-fixed, paraffin embedded Human Placenta; Antigen retrieval by boiling in sodium citrate buffer (pH6.0) for 15 min; Antibody incubation with PD-L1 Monoclonal Antibody, Unconjugated(bsm-43073R) at 1:200 overnight at 4°C, followed by conjugation to the bs-0295G-HRP and DAB (C-0010) staining.



4% Paraformaldehyde-fixed KARPAS-299 (H) cell; Antibody incubation with (PD-L1) monoclonal Antibody, unconjugated (bsm-43073R) 1:100, 90 min at 37°C; followed by conjugated Goat Anti-

Important Note: This product as supplied is intended for research use only, not for use in human, therapeutic or diagnostic applications.

Rabbit IgG antibody (green, bs-60295G-BF488) at 37°C for 90 min, DAPI (blue, C02-04002) was used to stain the cell nuclei. PBS instead of the primary antibody was used as the blank control.