

bsm-55560R**[Primary Antibody]**

www.bioss.com.cn

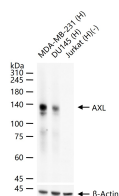
sales@bioss.com.cn

techsupport@bioss.com.cn

400-901-9800

AXL Recombinant Rabbit mAb**— DATASHEET —**

Host: Rabbit	Isotype: IgG	Applications: WB (1:500-2000) Reactivity: Human Predicted MW.: 95 kDa Subcellular Location: Cell membrane
Clonality: Recombinant	CloneNo.: 2F12	
GeneID: 558	SWISS: P30530	
Target: AXL		
Purification: affinity purified by Protein A		
Concentration: 1mg/ml		
Storage: 0.22μm filtered solution in 20mM hepes7.4, 150mm NaCl, 50% glycerin,0.03% proclin. Shipped at 4°C. Store at -20°C for one year. Avoid repeated freeze/thaw cycles.		
Background: The protein encoded by this gene is a member of the receptor tyrosine kinase subfamily. Although it is similar to other receptor tyrosine kinases, the Axl protein represents a unique structure of the extracellular region that juxtaposes IgL and FNIII repeats. It transduces signals from the extracellular matrix into the cytoplasm by binding growth factors such as vitamin K dependent protein growth arrest specific gene 6. It is involved in the stimulation of cell proliferation. This receptor can also mediate cell aggregation by homophilic binding. Axl is a chronic myelogenous leukemia associated oncogene and also associated with colon cancer and melanoma.The Axl gene is evolutionarily conserved between vertebrate species. This gene has two different alternatively spliced transcript variants (AXL1 and AXL2).		

— VALIDATION IMAGES —

25 ug total protein per lane of various lysates (see on figure) probed with AXL monoclonal antibody, unconjugated (bsm-55560R) at 1:1000 dilution and 4°C overnight incubation. Followed by conjugated secondary antibody incubation at r.t. for 60 min.