

bs-42465R**[Primary Antibody]****MLKL Rabbit pAb****Bioss**
ANTIBODIES

www.bioss.com.cn

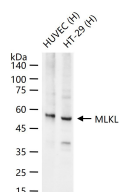
sales@bioss.com.cn

techsupport@bioss.com.cn

400-901-9800

— DATASHEET —

Host: Rabbit	Isotype: IgG	Applications: WB (1:500-2000)
Clonality: Polyclonal		Reactivity: Human
GeneID: 197259	SWISS: Q8NB16	
Target: MLKL		
Immunogen: Recombinant human MLKL protein: 1-263/471.		Predicted MW.: 54 kDa
Purification: affinity purified by Protein A		Subcellular Location: Cell membrane ,Cytoplasm
Concentration: 1mg/ml		
Storage: 0.01M TBS (pH7.4) with 1% BSA, 0.02% Proclin300 and 50% Glycerol. Shipped at 4°C. Store at -20°C for one year. Avoid repeated freeze/thaw cycles.		
Background: This gene belongs to the protein kinase superfamily. The encoded protein contains a protein kinase-like domain; however, is thought to be inactive because it lacks several residues required for activity. This protein plays a critical role in tumor necrosis factor (TNF)-induced necroptosis, a programmed cell death process, via interaction with receptor-interacting protein 3 (RIP3), which is a key signaling molecule in necroptosis pathway. Inhibitor studies and knockdown of this gene inhibited TNF-induced necrosis. High levels of this protein and RIP3 are associated with inflammatory bowel disease in children. Alternatively spliced transcript variants have been described for this gene. [provided by RefSeq, Sep 2015].		

— VALIDATION IMAGES —

25 ug total protein per lane of various lysates (see on figure) probed with MLKL polyclonal antibody, unconjugated (bs-42465R) at 1:1000 dilution and 4°C overnight incubation. Followed by conjugated secondary antibody incubation at r.t. for 60 min.