

bs-8586R**[Primary Antibody]****Bioss**
ANTIBODIES

www.bioss.com.cn

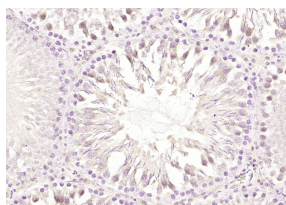
sales@bioss.com.cn

techsupport@bioss.com.cn

400-901-9800

GIPC-2 Rabbit pAb**DATASHEET**

Host: Rabbit	Isotype: IgG	Applications: IHC-P (1:100-500) IHC-F (1:100-500) IF (1:100-500) Reactivity: Rat (predicted: Human, Mouse, Rabbit, Pig, Sheep, Cow, Dog, Horse) Predicted MW.: 34 kDa Subcellular Location: Cytoplasm
Clonality: Polyclonal		
GeneID: 54810	SWISS: Q8TF65	
Target: GIPC-2		
Immunogen: KLH conjugated synthetic peptide derived from human GIPC2: 201-300/315.		
Purification: affinity purified by Protein A		
Concentration: 1mg/ml		
Storage: 0.01M TBS (pH7.4) with 1% BSA, 0.02% Proclin300 and 50% Glycerol. Shipped at 4°C. Store at -20°C for one year. Avoid repeated freeze/thaw cycles.		
Background: GIPC2 is a 315 amino acid protein that localizes to the cytoplasm and contains one PDZ domain. Expressed at high levels in kidney and colon and at lower levels in adult liver, GIPC2 interacts with SEMA5A and is thought to function as a scaffold protein, possibly modulating cell adhesion and growth factor signaling and playing a role in tumorigenesis. The gene encoding GIPC2 maps to human chromosome 1, which spans 260 million base pairs, contains over 3,000 genes and comprises nearly 8% of the human genome.		

VALIDATION IMAGES

Paraformaldehyde-fixed, paraffin embedded (rat testis); Antigen retrieval by boiling in sodium citrate buffer (pH6.0) for 15min; Block endogenous peroxidase by 3% hydrogen peroxide for 20 minutes; Blocking buffer (normal goat serum) at 37°C for 30min; Antibody incubation with (GIPC-2) Polyclonal Antibody, Unconjugated (bs-8586R) at 1:200 overnight at 4°C, followed by operating according to SP Kit(Rabbit) (sp-0023) instructions and DAB staining.

SELECTED CITATIONS

- **[IF=4.136]** Min Kang, et al. Increased expression of GIPC2 in colon adenocarcinoma is associated with a favorable prognosis and high levels of immune cell infiltration. ONCOL REP. 2023 Apr;49(4):1-11 IHC ;Human. 36799193