

bs-8387R**[Primary Antibody]****BioSS**
ANTIBODIES

www.bioss.com.cn

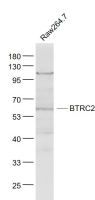
sales@bioss.com.cn

techsupport@bioss.com.cn

400-901-9800

BTRC2 Rabbit pAb**— DATASHEET —**

Host: Rabbit	Isotype: IgG	Applications: WB (1:500-2000)
Clonality: Polyclonal		Reactivity: Mouse (predicted: Human, Rat, Pig, Cow, Zebrafish, Chicken, Horse)
GeneID: 23291	SWISS: Q9UKB1	Predicted MW.: 62 kDa
Target: BTRC2		Subcellular Location: Cytoplasm ,Nucleus
Immunogen: KLH conjugated synthetic peptide derived from human BTRC2/beta TRCP2: 1-100/542.		
Purification: affinity purified by Protein A		
Concentration: 1mg/ml		
Storage: 0.01M TBS (pH7.4) with 1% BSA, 0.02% Proclin300 and 50% Glycerol. Shipped at 4°C. Store at -20°C for one year. Avoid repeated freeze/thaw cycles.		
Background: Beta TRCP2 is a member of the F-box protein family which is characterized by an approximately 40 amino acid motif, the F-box. The F-box proteins constitute one of the four subunits of ubiquitin protein ligase complex called SCFs (SKP1-cullin-F-box), which function in phosphorylation-dependent ubiquitination. The F-box proteins are divided into 3 classes: Fbws containing WD-40 domains, Fbls containing leucine-rich repeats, and Fbxs containing either different protein-protein interaction modules or no recognizable motifs. The protein encoded by this gene belongs to the Fbws class and, in addition to an F-box, contains multiple WD40 repeats. This gene contains at least 14 exons, and its alternative splicing generates 3 transcript variants diverging at the presence/absence of two alternate exons.		

— VALIDATION IMAGES —

Sample: Raw264.7(Mouse) Cell Lysate at 30 ug
Primary: Anti- BTRC2 (bs-8387R) at 1/1000
dilution Secondary: IRDye800CW Goat Anti-
Rabbit IgG at 1/20000 dilution Predicted band
size: 62 kD Observed band size: 62 kD

— SELECTED CITATIONS —

- **[IF=2.705]** Wu J et al. Nicotine inhibits murine Leydig cell differentiation and maturation via regulating Hedgehog signal pathway. Biochem Biophys Res Commun. 2019 Feb 26;510(1):1-7. WB ;Mouse. 30683315