

**bs-4710R****[ Primary Antibody ]****Bioss**  
ANTIBODIES

www.bioss.com.cn

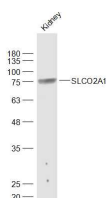
sales@bioss.com.cn

techsupport@bioss.com.cn

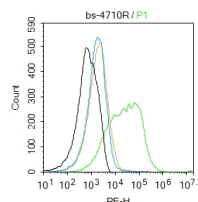
400-901-9800

**SLCO2A1 Rabbit pAb****DATASHEET**

<b>Host:</b> Rabbit <b>Clonality:</b> Polyclonal <b>GeneID:</b> 6578 <b>Target:</b> SLCO2A1 <b>Immunogen:</b> KLH conjugated synthetic peptide derived from human PGT/Slco2a1: 611-643/643. < Cytoplasmic > <b>Purification:</b> affinity purified by Protein A <b>Concentration:</b> 1mg/ml <b>Storage:</b> 0.01M TBS (pH7.4) with 1% BSA, 0.02% Proclin300 and 50% Glycerol. Shipped at 4°C. Store at -20°C for one year. Avoid repeated freeze/thaw cycles. <b>Background:</b> The organic anion transporting polypeptide (OATP) family of proteins play a role in drug absorption, distribution and excretion. OATP proteins mediate the uptake of a broad range of substrates, including bile salts, hormones, drugs and antibiotics, and they are expressed in various tissues, such as gut, brain, kidney and liver. PGT, also known as SLCO2A1 (solute carrier organic anion transporter family, member 2A1), SLC21A2 or OATP2A1, is a 643 amino acid multi-pass membrane protein that belongs to the organic anion transporter family. Expressed ubiquitously, PGT is thought to mediate the release, transepithelial transport and clearance of prostaglandins from cells to other areas of the body. The gene encoding PGT maps to human chromosome 3, which houses over 1,100 genes, including a chemokine receptor (CKR) gene cluster and a variety of human cancer-related gene loci.	<b>Isotype:</b> IgG <b>SWISS:</b> Q92959 <b>Applications:</b> <b>WB</b> (1:500-2000) <b>Flow-Cyt</b> (3ug/Test) <b>Reactivity:</b> Mouse (predicted: Human, Rat) <b>Predicted MW.:</b> 70 kDa <b>Subcellular Location:</b> Cell membrane
--	--

**VALIDATION IMAGES**

Sample: Kidney (Mouse) Lysate at 40 ug Primary:  
Anti-SLCO2A1 (bs-4710R) at 1/1000 dilution  
Secondary: IRDye800CW Goat Anti-Rabbit IgG at  
1/20000 dilution Predicted band size: 70 kD  
Observed band size: 75 kD



Blank control: Mouse kidney. Primary Antibody (green line): Rabbit Anti-SLCO2A1 antibody (bs-4710R) Dilution: 3µg /10<sup>6</sup> cells; Isotype Control Antibody (orange line): Rabbit IgG . Secondary Antibody : Goat anti-rabbit IgG-PE Dilution: 1µg /test. Protocol The cells were incubated in 5%BSA to block non-specific protein-protein interactions for 30 min at room temperature .Cells stained with Primary Antibody for 30 min at room temperature. The secondary antibody used for 40 min at room temperature. Acquisition of 20,000 events was performed.

**SELECTED CITATIONS**

- **[IF=2.74]** Nanase Takahashi. et al. Up-regulation of cytosolic prostaglandin E synthase in fetal-membrane and amniotic prostaglandin E2 accumulation in labor. Plos One. 2021 Apr;16(4):e0250638 IHC ;Human. 33891661

Important Note: This product as supplied is intended for research use only, not for use in human, therapeutic or diagnostic applications.