

**bs-24212R**

**[ Primary Antibody ]**

## LRRC25 Rabbit pAb

**Bioss**  
ANTIBODIES

www.bioss.com.cn

sales@bioss.com.cn

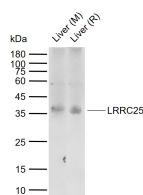
techsupport@bioss.com.cn

400-901-9800

### — DATASHEET —

<b>Host:</b> Rabbit	<b>Isotype:</b> IgG	<b>Applications:</b> WB (1:500-2000)
<b>Clonality:</b> Polyclonal		
<b>Target:</b> LRRC25		
<b>Purification:</b> affinity purified by Protein A		
<b>Concentration:</b> 1mg/1ml		
<b>Storage:</b> 0.01M TBS (pH7.4) with 1% BSA, 0.02% Proclin300 and 50% Glycerol. Shipped at 4°C. Store at -20°C for one year. Avoid repeated freeze/thaw cycles.		<b>Reactivity:</b> Mouse, Rat
<b>Background:</b> LRRC25 is a 305 amino acid protein that contains two LRR repeats. LRRC25 is a single-pass type I membrane protein that is expressed in monocyte-derived dendritic cells (MDDC), granulocytes, monocytes, plasmacytoid dendritic cells (PDC), B-lymphocytes, peripheral blood leukocytes, spleen and bone marrow, with lower levels in lymph nodes, fetal liver, and appendix. LRRC25 may play a role in the activation of cells of innate and acquired immunity.		<b>Predicted MW.:</b> 31 kDa
		<b>Subcellular Location:</b> Cell membrane

### — VALIDATION IMAGES —



Sample: Lane 1: Mouse Liver tissue lysates Lane  
2: Rat Liver tissue lysates Primary: Anti-LRRC25  
(bs-24212R) at 1/1000 dilution Secondary:  
IRDye800CW Goat Anti-Rabbit IgG at 1/20000  
dilution Predicted band size: 31 kDa Observed  
band size: 36 kDa