

**bs-6548R****[ Primary Antibody ]****MARVELD1 Rabbit pAb****Bioss**  
**ANTIBODIES**

www.bioss.com.cn

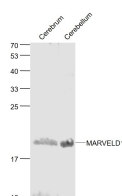
sales@bioss.com.cn

techsupport@bioss.com.cn

400-901-9800

**— DATASHEET —**

<b>Host:</b> Rabbit <b>Clonality:</b> Polyclonal <b>GeneID:</b> 83742 <b>Target:</b> MARVELD1 <b>Immunogen:</b> KLH conjugated synthetic peptide derived from human MARVELD1: 31-130/173. < Extracellular > <b>Purification:</b> affinity purified by Protein A <b>Concentration:</b> 1mg/ml <b>Storage:</b> 0.01M TBS (pH7.4) with 1% BSA, 0.02% Proclin300 and 50% Glycerol. Shipped at 4°C. Store at -20°C for one year. Avoid repeated freeze/thaw cycles. <b>Background:</b> MARVELD1, (MARVEL domain-containing 1), is one of the MARVEL (MAL and related proteins for vesicle trafficking and membrane link) domain-containing proteins. It is a nuclear-localized protein that is widely expressed in normal human tissues. While it has been reported to be overexpressed in colon cancer, MARVELD1 protein levels are generally lower in several primary tumors including ovary, breast, kidney, bladder and liver. This lower level of MARVELD1 expression in tumors is thought to be due to a higher methylation status of the MARVELD1 promoter as treatment of MDA-MB-361 with 5-aza-2'-deoxycytidine restores MARVELD1 expression, suggesting that loss of MARVELD1 expression may contribute to tumorigenicity.	<b>Isotype:</b> IgG <b>SWISS:</b> Q9BSK0	<b>Applications:</b> WB (1:500-2000) <b>Reactivity:</b> Mouse (predicted: Human, Rabbit) <b>Predicted MW.:</b> 19 kDa <b>Subcellular Location:</b> Cell membrane ,Cytoplasm ,Nucleus
--	---	---

**— VALIDATION IMAGES —**

Sample: Cerebrum (Mouse) Lysate at 40 ug  
Cerebellum (Mouse) Lysate at 40 ug Primary:  
Anti- MARVELD1 (bs-6548R) at 1/1000 dilution  
Secondary: IRDye800CW Goat Anti-Rabbit IgG at  
1/20000 dilution Predicted band size: 19 kD  
Observed band size: 19 kD