

bs-6541R**[Primary Antibody]****BioSS**
ANTIBODIES

www.bioss.com.cn

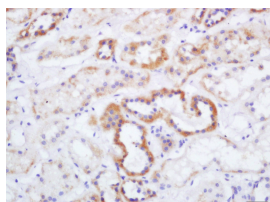
sales@bioss.com.cn

techsupport@bioss.com.cn

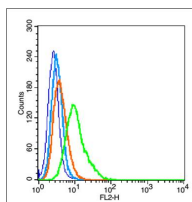
400-901-9800

ID1 Rabbit pAb**— DATASHEET —**

Host: Rabbit	Isotype: IgG	Applications: IHC-P (1:100-500)
Clonality: Polyclonal		IHC-F (1:100-500)
GeneID: 3397	SWISS: P41134	IF (1:100-500)
Target: ID1		Flow-Cyt (1ug/Test)
Immunogen: KLH conjugated synthetic peptide derived from human ID1: 51-155/155.		Reactivity: Human (predicted: Mouse, Rat, Rabbit, Cow, Chicken, Dog)
Purification: affinity purified by Protein A		
Concentration: 1mg/ml		Predicted MW.: 16 kDa
Storage: 0.01M TBS (pH7.4) with 1% BSA, 0.02% Proclin300 and 50% Glycerol. Shipped at 4°C. Store at -20°C for one year. Avoid repeated freeze/thaw cycles.		Subcellular Location: Cytoplasm ,Nucleus
Background: ID proteins contain a helix-loop-helix (HLH) motif and regulate tissue-specific transcription within several cell lineages. They do not bind DNA directly, but inhibit lineage commitment by binding basic helix-loop-helix (bHLH) transcription factors through their HLH motif. ID proteins contribute to cell growth, senescence, differentiation and angiogenesis. Id1 mRNA is highly expressed in heart, lung and kidney and has lower expression in brain and liver. Two transcript variants encoding different isoforms have been found for this gene.		

— VALIDATION IMAGES —

Tissue/cell: human kidney tissue; 4% Paraformaldehyde-fixed and paraffin-embedded; Antigen retrieval: citrate buffer (0.01M, pH 6.0), Boiling bathing for 15min; Block endogenous peroxidase by 3% Hydrogen peroxide for 30min; Blocking buffer (normal goat serum, C-0005) at 37°C for 20 min; Incubation: Anti-Id1 Polyclonal Antibody, Unconjugated(bs-6541R) 1:200, overnight at 4°C, followed by conjugation to the secondary antibody(SP-0023) and DAB(C-0010) staining



Blank control (blue line): A549 (fixed with 2% paraformaldehyde (10 min), then permeabilized with 90% ice-cold methanol for 30 min on ice). Primary Antibody (green line): Rabbit Anti-ID1 antibody (bs-6541R), Dilution: 1μg / 10⁶ cells; Isotype Control Antibody (orange line): Rabbit IgG. Secondary Antibody (white blue line): Goat anti-rabbit IgG-PE, Dilution: 1μg / test.