

bs-5890R**[Primary Antibody]****BioSS**
ANTIBODIES

www.bioss.com.cn

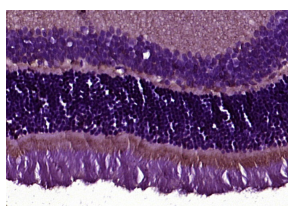
sales@bioss.com.cn

techsupport@bioss.com.cn

400-901-9800

Lumican Rabbit pAb**— DATASHEET —**

| | | |
|---|----------------------|---|
| Host: Rabbit | Isotype: IgG | Applications: IHC-P (1:100-500) IHC-F (1:100-500) IF (1:100-500) |
| Clonality: Polyclonal | | |
| GeneID: 4060 | SWISS: P51884 | |
| Target: Lumican | | |
| Immunogen: KLH conjugated synthetic peptide derived from human Lumican: 61-160/338. | | |
| Purification: affinity purified by Protein A | | Reactivity: Rat (predicted: Human, Mouse, Rabbit, Pig, Cow, Horse) |
| Concentration: 1mg/ml | | Predicted MW.: 35 kDa |
| Storage: 0.01M TBS (pH7.4) with 1% BSA, 0.02% Proclin300 and 50% Glycerol. Shipped at 4°C. Store at -20°C for one year. Avoid repeated freeze/thaw cycles. | | Subcellular Location: Secreted ,Extracellular matrix |
| Background: Present in the extracellular matrix of human articular cartilage at all ages, although its abundance is far greater in the adult. In the adult cartilage lumican exists predominantly in a glycoprotein form lacking keratan sulfate, whereas the juvenile form of the molecule is a proteoglycan. | | |

— VALIDATION IMAGES —

Paraformaldehyde-fixed, paraffin embedded (rat retina tissue); Antigen retrieval by boiling in sodium citrate buffer (pH6.0) for 15min; Block endogenous peroxidase by 3% hydrogen peroxide for 20 minutes; Blocking buffer (normal goat serum) at 37°C for 30min; Antibody incubation with (Lumican) Polyclonal Antibody, Unconjugated (bs-5890R) at 1:200 overnight at 4°C, followed by operating according to SP Kit(Rabbit) (sp-0023) instructions and DAB staining.

— SELECTED CITATIONS —

- **[IF=14.593]** Binbin He. et al. 3D printed biomimetic epithelium/stroma bilayer hydrogel implant for corneal regeneration. Bioact Mater. 2022 Jan; IF ;Rabbit. 10.1016/j.bioactmat.2022.01.034
- **[IF=14.7]** Riau Andri K.. et al. Impact of keratocyte differentiation on corneal opacity resolution and visual function recovery in male rats. NAT COMMUN. 2024 Jun;15(1):1-17 ICC,IF ;Rat. 38862465
- **[IF=11.061]** Shuo Jia. et al. Digital light processing-bioprinted poly-NAGA-GelMA-based hydrogel lenticule for precise refractive errors correction. BIOFABRICATION. 2023 Apr; IF ;Human. 37019117
- **[IF=4.925]** Ruixing Liu. et al. Celastrol Alleviates Corneal Stromal Fibrosis by Inhibiting TGF-β1/Smad2/3-YAP/TAZ Signaling After Descemet Stripping Endothelial Keratoplasty. INVEST OPHTH VIS SCI. 2023 Mar;64(3):9-9 FCM ;Rabbit.

Important Note: This product as supplied is intended for research use only, not for use in human, therapeutic or diagnostic applications.

36867128

- **[IF=4.9]** María Dolores Salinas. et al. Expression of Lumican and Osteopontin in Perivascular Areas of the Glioblastoma Peritumoral Niche and Its Value for Prognosis. INT J MOL SCI. 2024 Dec;26(1):192 IHC,IF ;Human,Mouse. 39796053