
HOXB8 Rabbit pAb

Catalog Number: bs-6539R

Target Protein: HOXB8

Concentration: 1mg/ml

Form: Liquid

Host: Rabbit

Clonality: Polyclonal

Isotype: IgG

Applications: WB (1:500-2000)

Reactivity: Mouse (predicted:Human, Rat, Cow, Dog)

Predicted MW: 28 kDa

Entrez Gene: 3218

Swiss Prot: P17481

Source: KLH conjugated synthetic peptide derived from human HOXB8: 11-110/243.

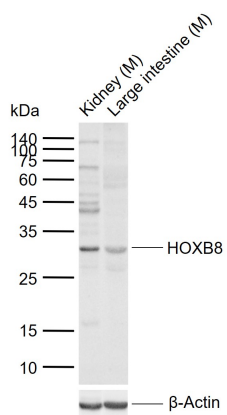
Purification: affinity purified by Protein A

Storage: 0.01M TBS (pH7.4) with 1% BSA, 0.02% Proclin300 and 50% Glycerol.

Shipped at 4°C. Store at -20°C for one year. Avoid repeated freeze/thaw cycles.

Background: This gene is a member of the Antp homeobox family and encodes a nuclear protein with a homeobox DNA-binding domain. It is included in a cluster of homeobox B genes located on chromosome 17. The encoded protein functions as a sequence-specific transcription factor that is involved in development. Increased expression of this gene is associated with colorectal cancer. Mice that have had the murine ortholog of this gene knocked out exhibit an excessive pathologic grooming behavior. This behavior is similar to the behavior of humans suffering from the obsessive-compulsive spectrum disorder trichotillomania.

VALIDATION IMAGES



Sample: Lane 1: Mouse Kidney tissue lysates Lane 2: Mouse Large intestine tissue lysates Primary: Anti-HOXB8 (bs-6539R) at 1/1000 dilution Secondary: IRDye800CW Goat Anti-Rabbit IgG at 1/20000 dilution
Predicted band size: 28 kDa Observed band size: 30 kDa

PRODUCT SPECIFIC PUBLICATIONS

[IF=2.058] Liu, Lidan. et al. The roles of HOXB8 through activating Wnt/ β -catenin and STAT3 signaling pathways in the growth, migration and invasion of ovarian cancer cells. Cytotechnology. 2022 Jan;;1-11 WB,IHC ; Human . 35185287