

PTN Rabbit pAb

Catalog Number: bs-21929R

Target Protein: PTN

Concentration: 1mg/ml

Form: Liquid

Host: Rabbit

Clonality: Polyclonal

Isotype: IgG

Applications: IHC-P (1:100-500), IHC-F (1:100-500), IF (1:100-500)

Reactivity: Human (predicted: Mouse, Rat, Rabbit, Pig, Sheep, Cow, Chicken, Horse)

Predicted MW: 15 kDa

Entrez Gene: 5764

Swiss Prot: P21246

Source: KLH conjugated synthetic peptide derived from human PTN: 21-120/168.

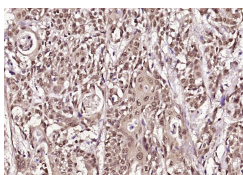
Purification: affinity purified by Protein A

Storage: 0.01M TBS (pH7.4) with 1% BSA, 0.02% Proclin300 and 50% Glycerol.

Shipped at 4°C. Store at -20°C for one year. Avoid repeated freeze/thaw cycles.

Background: Pleiotrophin is a heparin-binding growth factor involved in the differentiation and proliferation of neuronal tissue during embryogenesis, and also secreted by melanoma and breast carcinoma cells. Pleiotrophin exhibits mitogenic and angiogenic properties and has been shown to influence the vascular supply, expansion and metastasis of tumour cells.

VALIDATION IMAGES



Paraformaldehyde-fixed, paraffin embedded (human colon carcinoma); Antigen retrieval by boiling in sodium citrate buffer (pH6.0) for 15min; Block endogenous peroxidase by 3% hydrogen peroxide for 20 minutes; Blocking buffer (normal goat serum) at 37°C for 30min; Antibody incubation with (PTN) Polyclonal Antibody, Unconjugated (bs-21929R) at 1:200 overnight at 4°C, followed by operating according to SP Kit(Rabbit) (sp-0023) instructions and DAB staining.

PRODUCT SPECIFIC PUBLICATIONS

[IF=3.5] Liqing Ding. et al. Single cell transcriptomics reveals dysregulated immune homeostasis in different stages in HPV-induced cutaneous squamous cell carcinoma. EXP DERMATOL. 2024 Oct;33(10):e15178 IF ; Human . 39385326