

bsm-43703M

[Primary Antibody]

CD38 Mouse mAb

Bioss
ANTIBODIES

www.bioss.com.cn

sales@bioss.com.cn

techsupport@bioss.com.cn

400-901-9800

DATASHEET

Host: Mouse

Isotype: IgG

Clonality: Monoclonal

GeneID: 952

SWISS: P28907

Target: CD38

Immunogen: Recombinant human CD38 protein: 43-300/300.

Purification: affinity purified by Protein A

Concentration: 1mg/ml

Storage: 0.01M TBS (pH7.4) with 1% BSA, 0.02% Proclin300 and 50% Glycerol.
Shipped at 4°C. Store at -20°C for one year. Avoid repeated freeze/thaw cycles.

Background: The protein encoded by this gene is a non-lineage-restricted, type II transmembrane glycoprotein that synthesizes and hydrolyzes cyclic adenosine 5'-diphosphate-ribose, an intracellular calcium ion mobilizing messenger. The release of soluble protein and the ability of membrane-bound protein to become internalized indicate both extracellular and intracellular functions for the protein. This protein has an N-terminal cytoplasmic tail, a single membrane-spanning domain, and a C-terminal extracellular region with four N-glycosylation sites. Crystal structure analysis demonstrates that the functional molecule is a dimer, with the central portion containing the catalytic site. It is used as a prognostic marker for patients with chronic lymphocytic leukemia. Alternative splicing results in multiple transcript variants. [provided by RefSeq, Sep 2015]

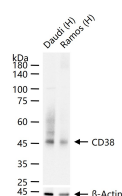
Applications: WB (1:500-2000)
IHC-P (1:100-500)
IHC-F (1:100-500)
IF (1:100-500)
Flow-Cyt (1µg/Test)
ICC/IF (1:50-200)

Reactivity: Human

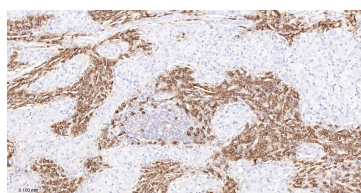
Predicted MW.: 34 kDa

Subcellular Location: Cell membrane

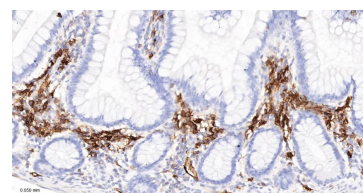
VALIDATION IMAGES



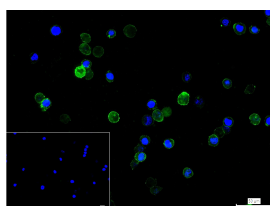
25 µg total protein per lane of various lysates (see on figure) probed with CD38 monoclonal antibody, unconjugated (bsm-43703M) at 1:1000 dilution and 4°C overnight incubation. Followed by conjugated secondary antibody incubation at r.t. for 60 min.



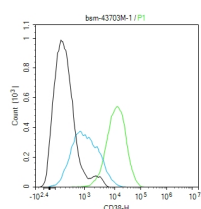
Paraformaldehyde-fixed, paraffin embedded Human Gastric Cancer; Antigen retrieval by boiling in sodium citrate buffer (pH6.0) for 15 min; The section was incubated with CD38 Monoclonal Antibody, Unconjugated (bsm-43703M) at 1:200 overnight at 4°C, followed by conjugation to the bs-40296G-HRP and DAB (C-0010) staining.



Paraformaldehyde-fixed, paraffin embedded Human Small Intestine; Antigen retrieval by boiling in sodium citrate buffer (pH6.0) for 15 min; The section was incubated with CD38 Monoclonal Antibody, Unconjugated (bsm-43703M) at 1:200 overnight at 4°C, followed by conjugation to the bs-40296G-HRP and DAB (C-0010) staining.



4% Paraformaldehyde-fixed Raji (H) cell; Antibody incubation with (CD38) monoclonal Antibody, unconjugated (bsm-43703M) 1:100, 90 min at 37°C; followed by conjugated Goat Anti-



The Raji (H) cells were incubated in 5%BSA to block non-specific protein-protein interactions (30 min at r.t.). Primary Antibody (green): Mouse Anti-CD38 antibody (bsm-43703M): 1 µg/10⁶

Important Note: This product as supplied is intended for research use only, not for use in human, therapeutic or diagnostic applications.

Mouse IgG antibody (green, bs-60296G-FITC) at 37°C for 90 min, DAPI (blue, C02-04002) was used to stain the cell nuclei. PBS instead of the primary antibody was used as the blank control.

cells; Secondary Antibody (white blue): Goat anti-Mouse IgG-FITC (bs-60296G-FITC): 1 µg/test. Blank control (black): PBS. Acquisition of 20,000 events was performed.