

**bsm-43679M**

**[ Primary Antibody ]**

## CD163 Mouse mAb

**Bioss**  
ANTIBODIES

www.bioss.com.cn

sales@bioss.com.cn

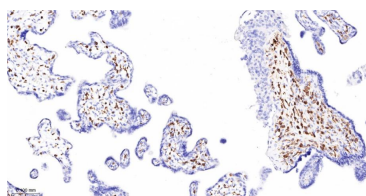
techsupport@bioss.com.cn

400-901-9800

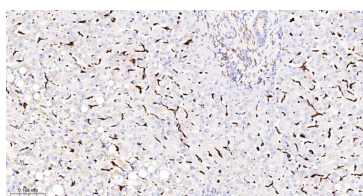
### — DATASHEET —

<b>Host:</b> Mouse	<b>Isotype:</b> IgG	<b>Applications:</b> IHC-P (1:200-800) IHC-F (1:200-800) IF (1:200-800)  <b>Reactivity:</b> Human   <b>Predicted MW.:</b> 130 kDa  <b>Subcellular Location:</b> Secreted ,Cell membrane
<b>Clonality:</b> Monoclonal		
<b>GeneID:</b> 9332	<b>SWISS:</b> Q86VB7	
<b>Target:</b> CD163		
<b>Immunogen:</b> Recombinant human CD163 protein: 42-1045/1156.		
<b>Purification:</b> affinity purified by Protein A		
<b>Concentration:</b> 1mg/ml		
<b>Storage:</b> 0.01M TBS (pH7.4) with 1% BSA, 0.02% Proclin300 and 50% Glycerol. Shipped at 4°C. Store at -20°C for one year. Avoid repeated freeze/thaw cycles.		
<b>Background:</b> The protein encoded by this gene is a member of the scavenger receptor cysteine-rich (SRCR) superfamily, and is exclusively expressed in monocytes and macrophages. It functions as an acute phase-regulated receptor involved in the clearance and endocytosis of hemoglobin/haptoglobin complexes by macrophages, and may thereby protect tissues from free hemoglobin-mediated oxidative damage. This protein may also function as an innate immune sensor for bacteria and inducer of local inflammation. Alternatively spliced transcript variants encoding different isoforms have been described for this gene. [provided by RefSeq, Aug 2011]		

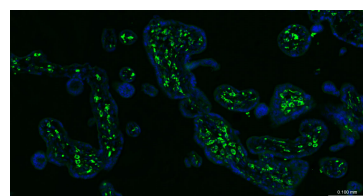
### — VALIDATION IMAGES —



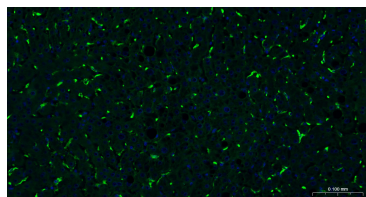
Paraformaldehyde-fixed, paraffin embedded Human Placenta; Antigen retrieval by boiling in sodium citrate buffer (pH6.0) for 15 min; The section was incubated with CD163 Monoclonal Antibody, Unconjugated (bsm-43679M) at 1:200 overnight at 4°C, followed by conjugation to the bs-40296G-HRP and DAB (C-0010) staining.



Paraformaldehyde-fixed, paraffin embedded Human Liver; Antigen retrieval by boiling in sodium citrate buffer (pH6.0) for 15 min; The section was incubated with CD163 Monoclonal Antibody, Unconjugated (bsm-43679M) at 1:200 overnight at 4°C, followed by conjugation to the bs-40296G-HRP and DAB (C-0010) staining.



Paraformaldehyde-fixed, paraffin embedded Human Placenta; Antigen retrieval by boiling in sodium citrate buffer (pH6.0) for 15 min; The section was incubated with CD163 Monoclonal Antibody, Unconjugated (bsm-43679M) at 1:200 overnight at 4°C. Followed by conjugated Goat Anti-Mouse IgG antibody (green, bs-0296G-BF488), DAPI (blue, C02-04002) was used to stain the cell nuclei.



Paraformaldehyde-fixed, paraffin embedded Human Liver; Antigen retrieval by boiling in sodium citrate buffer (pH6.0) for 15 min; The section was incubated with CD163 Monoclonal Antibody, Unconjugated (bsm-43679M) at 1:200 overnight at 4°C. Followed by conjugated Goat

Important Note: This product as supplied is intended for research use only, not for use in human, therapeutic or diagnostic applications.

Anti-Mouse IgG antibody (green, bs-0296G-BF488), DAPI (blue, C02-04002) was used to stain the cell nuclei.