

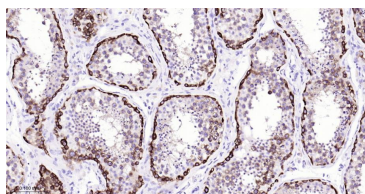
**bsm-33927M****[ Primary Antibody ]****MAGEC1 Mouse mAb****BioSS**  
**ANTIBODIES**

www.bioss.com.cn

sales@bioss.com.cn

techsupport@bioss.com.cn

400-901-9800

**— DATASHEET —****Host:** Mouse**Isotype:** IgG2b,k**Clonality:** Monoclonal**CloneNo.:** 1F2**GeneID:** 9947**SWISS:** O60732**Target:** MAGEC1**Purification:** affinity purified by Protein A**Concentration:** 1mg/ml**Storage:** PBS, 50% glycerol, 0.05% Proclin 300, 0.05%BSA  
Shipped at 4°C. Store at -20°C for one year. Avoid repeated freeze/thaw cycles.**Background:** This gene is a member of the melanoma antigen gene (MAGE) family. The proteins of this family are tumor-specific antigens that can be recognized by autologous cytolytic T lymphocytes. This protein contains a large number of unique short repetitive sequences in front of the MAGE-homologous sequence, and therefore is about 800 aa longer than the other MAGE proteins. [provided by RefSeq, Jul 2008]**Applications:** IHC-P (1:100-500)**IHC-F** (1:100-500)**IF** (1:100-500)**Reactivity:** Human**Predicted  
MW.:** 124 kDa**Subcellular  
Location:** Cell membrane ,Cytoplasm  
,Nucleus**— VALIDATION IMAGES —**

Paraformaldehyde-fixed, paraffin embedded Human Testicles; Antigen retrieval by boiling in sodium citrate buffer (pH6.0) for 15 min; Antibody incubation with MAGEC1 Monoclonal Antibody, Unconjugated(bsm-33927M) at 1:200 overnight at 4°C, followed by conjugation to the bs-40296G-HRP and DAB (C-0010) staining.