

**bs-42453R****[ Primary Antibody ]****Calreticulin Rabbit pAb****Bioss**  
ANTIBODIES

www.bioss.com.cn

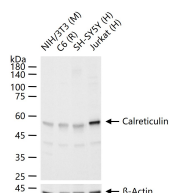
sales@bioss.com.cn

techsupport@bioss.com.cn

400-901-9800

**— DATASHEET —**

<b>Host:</b> Rabbit	<b>Isotype:</b> IgG	<b>Applications:</b> WB (1:500-2000)
<b>Clonality:</b> Polyclonal		<b>Reactivity:</b> Human, Mouse, Rat
<b>GeneID:</b> 811	<b>SWISS:</b> P27797	
<b>Target:</b> Calreticulin		
<b>Immunogen:</b> Recombinant human Calreticulin protein: 18-417/417.		<b>Predicted MW.:</b> 44 kDa
<b>Purification:</b> affinity purified by Protein A		<b>Subcellular Location:</b> Secreted ,Extracellular matrix ,Cell membrane ,Cytoplasm
<b>Concentration:</b> 1mg/ml		
<b>Storage:</b> 0.01M TBS (pH7.4) with 1% BSA, 0.02% Proclin300 and 50% Glycerol. Shipped at 4°C. Store at -20°C for one year. Avoid repeated freeze/thaw cycles.		
<b>Background:</b> Calreticulin is a highly conserved chaperone protein which resides primarily in the endoplasmic reticulum, and is involved in a variety of cellular processes, among them, cell adhesion. Additionally, it functions in protein folding quality control and calcium homeostasis. Calreticulin is also found in the nucleus, suggesting that it may have a role in transcription regulation. Systemic lupus erythematosus is associated with increased autoantibody titers against calreticulin. Recurrent mutations in calreticulin have been linked to various neoplasms, including the myeloproliferative type.[provided by RefSeq, May 2020]		

**— VALIDATION IMAGES —**

25 ug total protein per lane of various lysates  
(see on figure) probed with Calreticulin  
polyclonal antibody, unconjugated (bs-42453R)  
at 1:1000 dilution and 4°C overnight incubation.  
Followed by conjugated secondary antibody  
incubation at r.t. for 60 min.