

bs-42448R**[Primary Antibody]****LRRC33 Rabbit pAb****BioSS**
ANTIBODIES

www.bioss.com.cn

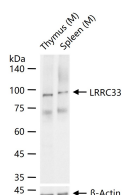
sales@bioss.com.cn

techsupport@bioss.com.cn

400-901-9800

— DATASHEET —

| | | |
|---|----------------------|--|
| Host: Rabbit | Isotype: IgG | Applications: WB (1:500-2000) |
| Clonality: Polyclonal | | Reactivity: Mouse |
| GeneID: 224109 | SWISS: Q8BMT4 | |
| Target: LRRC33 | | |
| Immunogen: Recombinant mouse LRRC33 protein: 21-209/693. | | Predicted MW.: 74 kDa |
| Purification: affinity purified by Protein A | | Subcellular Location: Cell membrane |
| Concentration: 1mg/ml | | |
| Storage: 0.01M TBS (pH7.4) with 1% BSA, 0.02% Proclin300 and 50% Glycerol. Shipped at 4°C. Store at -20°C for one year. Avoid repeated freeze/thaw cycles. | | |
| Background: LRRC33 is a 692 amino acid protein that contains 17 LRR repeats. The gene encoding LRRC33 maps to chromosome 3, which encodes over 1,100 genes. Particular regions of the chromosome 3 short arm are deleted in many types of cancer cells. Marfan syndrome, porphyria, von Hippel-Lindau syndrome, osteogenesis imperfecta and Charcot-Marie-Tooth disease are a few of the numerous genetic diseases associated with chromosome 3. | | |

— VALIDATION IMAGES —

25 ug total protein per lane of various lysates (see on figure) probed with LRRC33 polyclonal antibody, unconjugated (bs-42448R) at 1:1000 dilution and 4°C overnight incubation. Followed by conjugated secondary antibody incubation at r.t. for 60 min.