

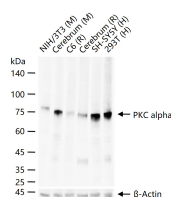
bsm-63319R**[Primary Antibody]****Bioss**
ANTIBODIES

www.bioss.com.cn

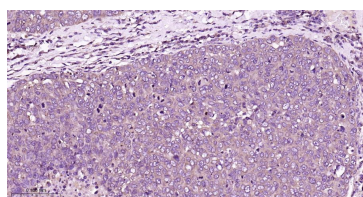
sales@bioss.com.cn

techsupport@bioss.com.cn

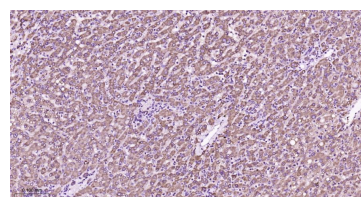
400-901-9800

PKC alpha Recombinant Rabbit mAb**— DATASHEET —****Host:** Rabbit**Isotype:** IgG**Clonality:** Recombinant**CloneNo.:** 9F8**GeneID:** 5578**SWISS:** P17252**Target:** PKC alpha**Immunogen:** A synthesized peptide derived from human PKC alpha: 644-672.**Purification:** affinity purified by Protein A**Concentration:** 1mg/ml**Storage:** 10mM phosphate buffered saline , pH 7.4, 150mM sodium chloride, 0.05% BSA, 0.02% Proclin300 and 50% glycerol. Shipped at 4°C. Store at -20°C for one year. Avoid repeated freeze/thaw cycles.**Background:** Protein Kinase c alpha (PKC alpha) is an 77 kDa member of the conventional group (cPKCs: sensitive to calcium, diacylglycerol, phosphatidylserine and phorbol esters) of the PKC family of serine/threonine kinases that are involved in a wide range of physiological processes including mitogenesis, cell survival and transcriptional regulation. PKC alpha is an ubiquitously expressed PKC isozyme that has been implicated in the regulation of a broad range of cellular functions including proliferation, differentiation, development, migration, cell cell adhesion, cell extracellular matrix adhesion, and solute transport. The activation loop threonine (threonine 497 in PKC alpha) of conventional PKCs is phosphorylated by phosphoinositide dependent kinase 1 (PDK1). This phosphorylation is necessary for the autophosphorylation of threonine 638 in the carboxy terminus of PKC alpha, a step that is critical for regulating the rate of PKC alpha dephosphorylation and inactivation.**Applications:** WB (1:500-2000)**IHC-P** (1:50-200)**IHC-F** (1:50-200)**IF** (1:50-200)**Flow-Cyt** (1:50-100)**ICC/IF** (1:50-200)**IP** (1:20-50)**Reactivity:** Human, Mouse, Rat**Predicted
MW.:** 77 kDa**Subcellular
Location:** Cell membrane ,Cytoplasm
Nucleus**— VALIDATION IMAGES —**

25 ug total protein per lane of various lysates (see on figure) probed with PKC alpha monoclonal antibody, unconjugated (bsm-63319R) at 1:1000 dilution and 4°C overnight incubation. Followed by conjugated secondary antibody incubation at r.t. for 60 min.



Paraformaldehyde-fixed, paraffin embedded Human Breast Cancer; Antigen retrieval by boiling in sodium citrate buffer (pH6.0) for 15 min; The section was incubated with PKC alpha Monoclonal Antibody, Unconjugated(bsm-63319R) at 1:200 overnight at 4°C, followed by conjugation to the bs-0295G-HRP and DAB (C-0010) staining.



Paraformaldehyde-fixed, paraffin embedded Human liver; Antigen retrieval by boiling in sodium citrate buffer (pH6.0) for 15 min; The section was incubated with PKC alpha Monoclonal Antibody, Unconjugated(bsm-63319R) at 1:200 overnight at 4°C, followed by conjugation to the bs-0295G-HRP and DAB (C-0010) staining.