

**[ Primary Antibody ]**

## eIF4E Recombinant Rabbit mAb



**BioSS**  
ANTIBODIES

www.bioss.com.cn

sales@bioass.com.cn

techsupport@bioss.com.cn

400-901-9800

## — DATASHEET

**Host:** Rabbit

**Clonality:** Recombinant

**GeneID:** 1977

**Target:** eIF4E

**Isotype:** IgG

**CloneNo.:** 1F2

**SWISS:** P06730

**Immunogen:** A synthesized peptide derived from human eIF4E: 150-217.

**Purification:** affinity purified by Protein A

**Storage:** 10mM phosphate buffered saline(pH 7.4) with 150mM sodium chloride, 0.05% BSA, 0.02% Proclin300 and 50% glycerol. Store at 4°C for short term. Store at -20°C for long term. Avoid repeated freeze/thaw cycles.

**Background:** Acts in the cytoplasm to initiate and regulate protein synthesis and is required in the nucleus for export of a subset of mRNAs from the nucleus to the cytoplasm which promotes processes such as RNA capping, processing and splicing.

**Applications: WB (1:500-2000)**

**IHC-P** (1:50-200)

**IHC-F (1:50-200)**

**IF (1:50-200)**

**Flow-Cyt** (1:

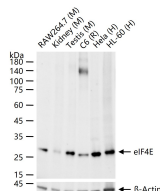
**IP** (1:20-50)

**Reactivity:** Human, Mouse, Rat

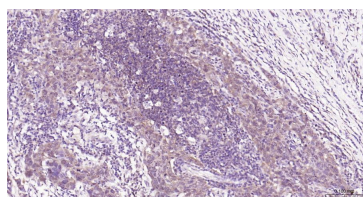
**Predicted**  
**MW.:** 25 kDa

**Subcellular Location:** Cytoplasm ,Nucleus

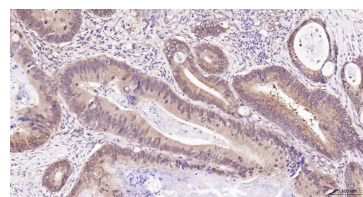
— VALIDATION IMAGES



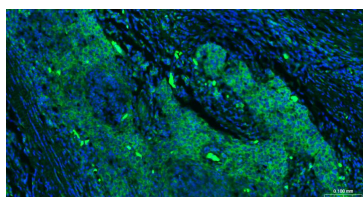
25 ug total protein per lane of various lysates (see on figure) probed with eIF4E monoclonal antibody, unconjugated (bsm-63259R) at 1:1000 dilution and 4°C overnight incubation. Followed by conjugated secondary antibody incubation at r.t. for 60 min.



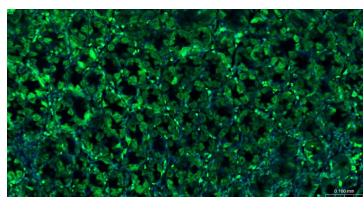
Paraformaldehyde-fixed, paraffin embedded Human Breast Cancer; Antigen retrieval by boiling in sodium citrate buffer (pH6.0) for 15 min; Antibody incubation with eIF4E Monoclonal Antibody, unconjugated (bsm-63259R) at 1:200 overnight at 4°C, followed by conjugation to the bs-0295G-HRP and DAB (C-0010) staining.



Paraformaldehyde-fixed, paraffin embedded Human Colon Cancer; Antigen retrieval by boiling in sodium citrate buffer (pH6.0) for 15 min; Antibody incubation with eIF4E Monoclonal Antibody, unconjugated(bsm-63259R) at 1:200 overnight at 4°C, followed by conjugation to the bs-0295G-HRP and DAB (C-0010) staining.



Paraformaldehyde-fixed, paraffin embedded Human Breast Cancer; Antigen retrieval by boiling in sodium citrate buffer (pH6.0) for 15 min; Antibody incubation with eIF4E Monoclonal Antibody, Unconjugated (bsm-63259R) at 1:200 overnight at 4°C. Followed by conjugated Goat Anti-Rabbit IgG antibody (green, bs-0295G-BF488), DAPI (blue, C02-04002) was used to stain the cell nuclei.



Paraformaldehyde-fixed, paraffin embedded Human Stomach; Antigen retrieval by boiling in sodium citrate buffer (pH6.0) for 15 min; Antibody incubation with eIF4E Monoclonal Antibody, Unconjugated (bsm-63259R) at 1:200 overnight at 4°C. Followed by conjugated Goat Anti-Rabbit IgG antibody (green, bs-0295G-BF488), DAPI (blue, C02-04002) was used to stain the cell nuclei.

Important Note: This product as supplied is intended for research use only, not for use in human, therapeutic or diagnostic applications.