

bsm-63179R**[Primary Antibody]**

14-3-3 alpha/beta/zeta/delta Recombinant Rabbit mAb

BioSS
ANTIBODIES

www.bioss.com.cn

sales@bioss.com.cn

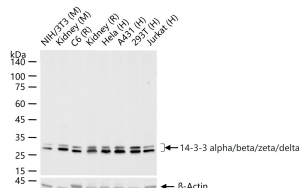
techsupport@bioss.com.cn

400-901-9800

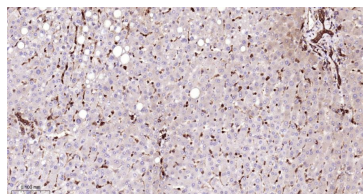
— DATASHEET —

Host: Rabbit	Isotype: IgG	Applications: WB (1:500-2000) IHC-P (1:100-500) IHC-F (1:100-500) IF (1:100-500) Reactivity: Human, Mouse, Rat Predicted MW.: 28 kDa Subcellular Location: Cytoplasm
Clonality: Recombinant	CloneNo.: 4F3	
GeneID: 7529	SWISS: P31946	
Target: 14-3-3 alpha/beta/zeta/delta		
Immunogen: A synthesized peptide derived from human 14-3-3 alpha/beta: 1-50/246.		
Purification: affinity purified by Protein A		
Storage: 10mM phosphate buffered saline(pH 7.4) with 150mM sodium chloride, 0.05% BSA, 0.02% Proclin300 and 50% glycerol. Store at 4°C for short term. Store at -20°C for long term. Avoid repeated freeze/thaw cycles.		
Background: Adapter protein implicated in the regulation of a large spectrum of both general and specialized signaling pathways. Binds to a large number of partners, usually by recognition of a phosphoserine or phosphothreonine motif. Binding generally results in the modulation of the activity of the binding partner. Negative regulator of osteogenesis.		

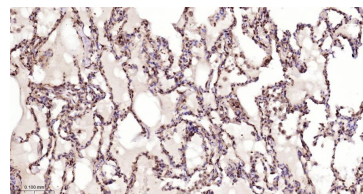
— VALIDATION IMAGES —



25 ug total protein per lane of various lysates (see on figure) probed with 14-3-3 alpha/beta/zeta/delta monoclonal antibody, unconjugated (bsm-63179R) at 1:1000 dilution and 4°C overnight incubation. Followed by conjugated secondary antibody incubation at r.t. for 60 min.



Paraformaldehyde-fixed, paraffin embedded Human Liver; Antigen retrieval by boiling in sodium citrate buffer (pH6.0) for 15 min; The section was incubated with 14-3-3 alpha/beta/zeta/delta Monoclonal Antibody, Unconjugated (bsm-63179R) at 1:200 overnight at 4°C, followed by conjugation to the bs-0295G-HRP and DAB (C-0010) staining.



Paraformaldehyde-fixed, paraffin embedded Human Lung; Antigen retrieval by boiling in sodium citrate buffer (pH6.0) for 15 min; The section was incubated with 14-3-3 alpha/beta/zeta/delta Monoclonal Antibody, Unconjugated (bsm-63179R) at 1:200 overnight at 4°C, followed by conjugation to the bs-0295G-HRP and DAB (C-0010) staining.