

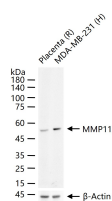
**bsm-63156R****[ Primary Antibody ]****BioSS**  
ANTIBODIES

www.bioss.com.cn

sales@bioss.com.cn

techsupport@bioss.com.cn

400-901-9800

**MMP11 Recombinant Rabbit mAb****— DATASHEET —****Host:** Rabbit**Isotype:** IgG**Clonality:** Recombinant**CloneNo.:** 12F7**GeneID:** 4320**SWISS:** P24347**Target:** MMP11**Immunogen:** A synthesized peptide derived from human MMP11: 450-488.**Purification:** affinity purified by Protein A**Storage:** 10mM phosphate buffered saline(pH 7.4) with 150mM sodium chloride, 0.05% BSA, 0.02% Proclin300 and 50% glycerol. Store at 4°C for short term. Store at -20°C for long term. Avoid repeated freeze/thaw cycles.**Background:** MMP11 May play an important role in the progression of epithelial malignancies. Belongs to the peptidase M10A family.**Applications:** **WB** (1:500-2000)  
**ICC/IF** (1:50-200)**Reactivity:** Human, Rat  
(predicted: Mouse)**Predicted**  
**MW.:** 55 kDa**Subcellular** Secreted ,Extracellular  
**Location:** matrix**— VALIDATION IMAGES —**

25 ug total protein per lane of various lysates (see on figure) probed with MMP11 monoclonal antibody, unconjugated (bsm-63156R) at 1:1000 dilution and 4°C overnight incubation. Followed by conjugated secondary antibody incubation at r.t. for 60 min.