

bsm-63151R

[Primary Antibody]

Cytokeratin 6 Recombinant Rabbit mAb

Bioss
ANTIBODIES

www.bioss.com.cn

sales@bioss.com.cn

techsupport@bioss.com.cn

400-901-9800

— DATASHEET —

Host: Rabbit

Isotype: IgG

Clonality: Recombinant

CloneNo.: 5F9

GeneID: 286887

SWISS: P02538

Target: Cytokeratin 6

Immunogen: A synthesized peptide derived from human Cytokeratin 6A: 1-45.

Purification: affinity purified by Protein A

Storage: 10mM phosphate buffered saline(pH 7.4) with 150mM sodium chloride, 0.05% BSA, 0.02% Proclin300 and 50% glycerol. Store at 4°C for short term. Store at -20°C for long term. Avoid repeated freeze/thaw cycles.

Background: Epidermis-specific type I keratin involved in wound healing. Involved in the activation of follicular keratinocytes after wounding, while it does not play a major role in keratinocyte proliferation or migration. Participates in the regulation of epithelial migration by inhibiting the activity of SRC during wound repair.

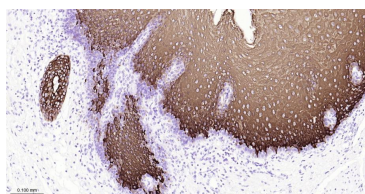
Applications: **WB** (1:500-1:2000)
IHC-P (1:100-1:500)
IHC-F (1:100-1:500)
IF (1:100-1:500)
ICC/IF (1:50-1:200)

Reactivity: Human

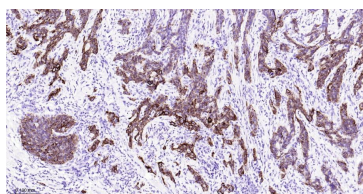
Predicted MW.: 60 kDa

Subcellular Location: Cytoplasm

— VALIDATION IMAGES —



Paraformaldehyde-fixed, paraffin embedded Human Esophagus; Antigen retrieval by boiling in sodium citrate buffer (pH6.0) for 15 min; The section was incubated with Cytokeratin 6 Monoclonal Antibody, Unconjugated (bsm-63151R) at 1:200 overnight at 4°C, followed by conjugation to the bs-0295G-HRP and DAB (C-0010) staining.



Paraformaldehyde-fixed, paraffin embedded Human Cervical Cancer; Antigen retrieval by boiling in sodium citrate buffer (pH6.0) for 15 min; The section was incubated with Cytokeratin 6 Monoclonal Antibody, Unconjugated (bsm-63151R) at 1:200 overnight at 4°C, followed by conjugation to the bs-0295G-HRP and DAB (C-0010) staining.