

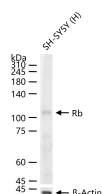
bsm-63143R**[Primary Antibody]****BioSS**
ANTIBODIES

www.bioss.com.cn

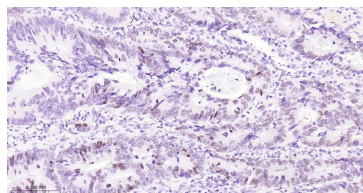
sales@bioss.com.cn

techsupport@bioss.com.cn

400-901-9800

Rb Recombinant Rabbit mAb**DATASHEET****Host:** Rabbit**Isotype:** IgG**Clonality:** Recombinant**CloneNo.:** 9F5**GeneID:** 5925**SWISS:** P06400**Target:** Rb**Immunogen:** A synthesized peptide derived from human Rb: 701-928.**Purification:** affinity purified by Protein A**Storage:** 10mM phosphate buffered saline(pH 7.4) with 150mM sodium chloride, 0.05% BSA, 0.02% Proclin300 and 50% glycerol. Store at 4°C for short term. Store at -20°C for long term. Avoid repeated freeze/thaw cycles.**Background:** Tumor suppressor that is a key regulator of the G1/S transition of the cell cycle. The hypophosphorylated form binds transcription regulators of the E2F family, preventing transcription of E2F-responsive genes.**Applications:** **WB** (1:500-1:2000)
IHC-P (1:50-1:200)
IHC-F (1:50-1:200)
IF (1:50-1:200)
Flow-Cyt (1ug/Test)
ICC/IF (1:50-1:200)
IP (1:20-1:50)**Reactivity:** Human**Predicted MW.:** 106 kDa**Subcellular Location:** Nucleus**VALIDATION IMAGES**

25 ug total protein per lane of various lysates (see on figure) probed with Rb monoclonal antibody, unconjugated (bsm-63143R) at 1:1000 dilution and 4°C overnight incubation. Followed by conjugated secondary antibody incubation at r.t. for 60 min.



Paraformaldehyde-fixed, paraffin embedded Human Colon Cancer; Antigen retrieval by boiling in sodium citrate buffer (pH6.0) for 15 min; Antibody incubation with Rb Monoclonal Antibody, Unconjugated(bsm-63143R) at 1:200 overnight at 4°C, followed by conjugation to the bs-0295G-HRP and DAB (C-0010) staining.