

bsm-63119R

[Primary Antibody]

AMPK alpha 1 Recombinant Rabbit mAb

Bioss
ANTIBODIES

www.bioss.com.cn

sales@bioss.com.cn

techsupport@bioss.com.cn

400-901-9800

— DATASHEET —

Host: Rabbit

Isotype: IgG

Clonality: Recombinant

CloneNo.: 7F5

GeneID: 5562

Target: AMPK alpha 1

Immunogen: A synthesized peptide derived from human AMPK alpha 1: 500-559.

Purification: affinity purified by Protein A

Storage: 10mM phosphate buffered saline(pH 7.4) with 150mM sodium chloride, 0.05% BSA, 0.02% Proclin300 and 50% glycerol. Store at 4°C for short term. Store at -20°C for long term. Avoid repeated freeze/thaw cycles.

Background: Catalytic subunit of AMP-activated protein kinase (AMPK), an energy sensor protein kinase that plays a key role in regulating cellular energy metabolism in response to reduction of intracellular ATP levels, AMPK activates energy-producing pathways and inhibits energy-consuming processes: inhibits protein, carbohydrate and lipid biosynthesis, as well as cell growth and proliferation.

Applications: WB (1:500-2000)

IHC-P (1:50-200)

IHC-F (1:50-200)

IF (1:50-200)

Flow-Cyt (1:50-100)

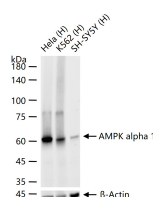
IP (1:20-50)

Reactivity: Human, Mouse, Rat

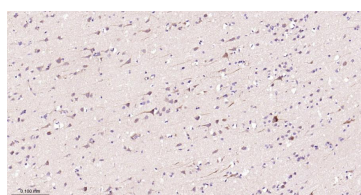
Predicted MW.: 64 kDa

Subcellular Location: Cytoplasm ,Nucleus

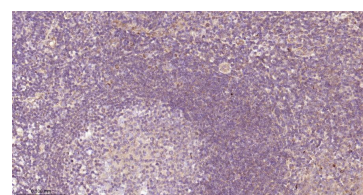
— VALIDATION IMAGES —



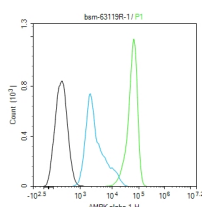
25 ug total protein per lane of various lysates (see on figure) probed with AMPK alpha 1 monoclonal antibody, unconjugated (bsm-63119R) at 1:1000 dilution and 4°C overnight incubation. Followed by conjugated secondary antibody incubation at r.t. for 60 min.



Paraformaldehyde-fixed, paraffin embedded Human Cerebrum; Antigen retrieval by boiling in sodium citrate buffer (pH6.0) for 15 min; Antibody incubation with AMPK alpha 1 Monoclonal Antibody, Unconjugated(bsm-63119R) at 1:200 overnight at 4°C, followed by conjugation to the bs-0295G-HRP and DAB (C-0010) staining.



Paraformaldehyde-fixed, paraffin embedded Human Tonsil; Antigen retrieval by boiling in sodium citrate buffer (pH6.0) for 15 min; Antibody incubation with AMPK alpha 1 Monoclonal Antibody, Unconjugated(bsm-63119R) at 1:200 overnight at 4°C, followed by conjugation to the bs-0295G-HRP and DAB (C-0010) staining.



The HepG2 (H) cells were fixed with 4% PFA (10 min at r.t.) and then permeabilized with 90% ice-cold methanol for 20 min at -20°C, the cells then were incubated in 5%BSA to block non-specific protein-protein interactions (30 min at r.t.). Primary Antibody (green): Rabbit Anti-AMPK alpha 1 antibody (bsm-63119R, 1:100); Secondary Antibody (white blue): Goat anti-Rabbit IgG-BF488 (bs-60295G-BF488): 1 µg/test. Blank control (black): PBS. Acquisition of 20,000 events was performed.