

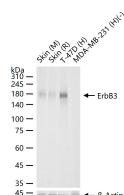
bsm-63114R**[Primary Antibody]****ErbB3 Recombinant Rabbit mAb****BioSS**
ANTIBODIES

www.bioss.com.cn

sales@bioss.com.cn

techsupport@bioss.com.cn

400-901-9800

— DATASHEET —**Host:** Rabbit**Isotype:** IgG**Clonality:** Recombinant**CloneNo.:** 3F10**GeneID:** 2065**SWISS:** P21860**Target:** ErbB3**Immunogen:** A synthesized peptide derived from human ErbB3: 1301-1342.**Purification:** affinity purified by Protein A**Storage:** 10mM phosphate buffered saline(pH 7.4) with 150mM sodium chloride, 0.05% BSA, 0.02% Proclin300 and 50% glycerol.
Store at 4°C for short term. Store at -20°C for long term. Avoid repeated freeze/thaw cycles.**Background:** Binds and is activated by neuregulins and NTAK.**Applications:** **WB** (1:500-2000)
IP (1:20-50)**Reactivity:** Human, Mouse, Rat**Predicted
MW.:** 148 kDa**Subcellular
Location:** Secreted ,Cell membrane**— VALIDATION IMAGES —**

25 ug total protein per lane of various lysates
(see on figure) probed with ErbB3 monoclonal
antibody, unconjugated (bsm-63114R) at 1:1000
dilution and 4°C overnight incubation. Followed
by conjugated secondary antibody incubation at
r.t. for 60 min.