

bsm-63087R

[Primary Antibody]

BioSS
ANTIBODIES

www.bioss.com.cn

sales@bioss.com.cn

techsupport@bioss.com.cn

400-901-9800

RUNX1/RUNX2/RUNX3 Recombinant Rabbit mAb

— DATASHEET —

Host: Rabbit

Clonality: Recombinant

GeneID: 860

Target: RUNX1/RUNX2/RUNX3

Immunogen: A synthesized peptide derived from human RUNX: 431-453.

Purification: affinity purified by Protein A

Concentration: 1mg/ml

Storage: 10mM phosphate buffered saline , pH 7.4, 150mM sodium chloride, 0.05% BSA, 0.02% sodium azide and 50% glycerol.
Shipped at 4°C. Store at -20°C for one year. Avoid repeated freeze/thaw cycles.

Background: This gene is a member of the RUNX family of transcription factors and encodes a nuclear protein with an Runt DNA-binding domain. This protein is essential for osteoblastic differentiation and skeletal morphogenesis and acts as a scaffold for nucleic acids and regulatory factors involved in skeletal gene expression. The protein can bind DNA both as a monomer or, with more affinity, as a subunit of a heterodimeric complex. Mutations in this gene have been associated with the bone development disorder cleidocranial dysplasia (CCD). Transcript variants that encode different protein isoforms result from the use of alternate promoters as well as alternate splicing. [provided by RefSeq, Jul 2008].

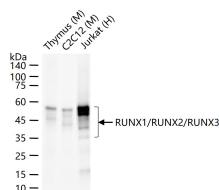
Applications: WB (1:500-2000)

Reactivity: Human, Mouse
(predicted: Rat)

**Predicted
MW:** 51 kDa

**Subcellular
Location:** Nucleus

— VALIDATION IMAGES —



25 ug total protein per lane of various lysates
(see on figure) probed with
RUNX1/RUNX2/RUNX3 monoclonal antibody,
unconjugated (bsm-63087R) at 1:1000 dilution
and 4°C overnight incubation. Followed by
conjugated secondary antibody incubation at r.t.
for 60 min.