

bs-13339R**[Primary Antibody]****GFM2 Rabbit pAb****BioSS**
ANTIBODIES

www.bioss.com.cn

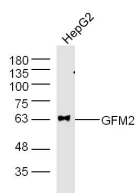
sales@bioss.com.cn

techsupport@bioss.com.cn

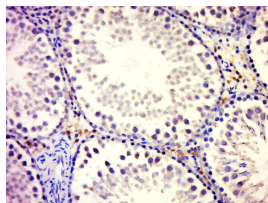
400-901-9800

— DATASHEET —

Host: Rabbit	Isotype: IgG	Applications: WB (1:500-2000) IHC-P (1:100-500) IHC-F (1:100-500) IF (1:100-500) Reactivity: Human, Rat (predicted: Mouse, Pig, Sheep, Cow, Dog) Predicted MW.: 87 kDa Subcellular Location: Cytoplasm
Clonality: Polyclonal		
GeneID: 84340	SWISS: Q969S9	
Target: GFM2		
Immunogen: KLH conjugated synthetic peptide derived from human GFM2: 151-250/779.		
Purification: affinity purified by Protein A		
Concentration: 1mg/ml		
Storage: 0.01M TBS (pH7.4) with 1% BSA, 0.02% Proclin300 and 50% Glycerol. Shipped at 4°C. Store at -20°C for one year. Avoid repeated freeze/thaw cycles.		
Background: GFM2 is a mitochondrial translation elongation factor. Its role in the regulation of normal mitochondrial function and in different disease states attributed to mitochondrial dysfunction is not known. Eukaryotes contain two protein translational systems, one in the cytoplasm and one in the mitochondria. Mitochondrial translation is crucial for maintaining mitochondrial function and mutations in this system lead to a breakdown in the respiratory chain oxidative phosphorylation system and to impaired maintenance of mitochondrial DNA.		

— VALIDATION IMAGES —

Protein: A549(human) lysates at 40ug; Primary:
Rabbit Anti-GFM2 (bs-13339R) at 1:300;
Secondary: 800CW Conjugated Goat (polyclonal)
Anti-Rabbit IgG(H+L) at 1: 10000; Predicted band
size:87 kD Observed band size:63 kD



Paraformaldehyde-fixed, paraffin embedded
(Rat testis); Antigen retrieval by boiling in
sodium citrate buffer (pH6.0) for 15min; Block
endogenous peroxidase by 3% hydrogen
peroxide for 20 minutes; Blocking buffer (normal
goat serum) at 37°C for 30min; Antibody
incubation with (GFM2) Polyclonal Antibody,
Unconjugated (bs-13339R) at 1:500 overnight at
4°C, followed by a conjugated secondary
(sp-0023) for 20 minutes and DAB staining.