

OCN Rabbit pAb

Catalog Number: bs-42421R

Target Protein: OCLN

Concentration: 1mg/ml

Form: Liquid

Host: Rabbit

Clonality: Polyclonal

Isotype: IgG

Applications: WB (1:500-2000)

Reactivity: Human, Mouse, Rat

Predicted MW: 57 kDa

Subcellular: Cell membrane

Locations:

Entrez Gene: 100506658

Swiss Prot: Q16625

Source: Recombinant human OCLN protein: 269-522/522.

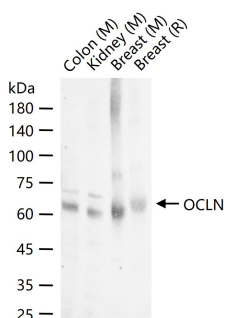
Purification: affinity purified by Protein A

Storage: 0.01M TBS (pH7.4) with 1% BSA, 0.02% Proclin300 and 50% Glycerol.

Shipped at 4°C. Store at -20°C for one year. Avoid repeated freeze/thaw cycles.

Background: This gene encodes an integral membrane protein which is located at tight junctions. This protein may be involved in the formation and maintenance of the tight junction. The possibility of several alternatively spliced products has been suggested but the full nature of these products has not been described. [provided by RefSeq].

VALIDATION IMAGES



25 ug total protein per lane of various lysates (see on figure) probed with OCLN polyclonal antibody, unconjugated (bs-42421R) at 1:1000 dilution and 4°C overnight incubation. Followed by conjugated secondary antibody incubation at r.t. for 60 min.