

bs-6330R

[Primary Antibody]

IFNA16/Interferon alpha 16 Rabbit pAb

Bioss
ANTIBODIES

www.bioss.com.cn

sales@bioss.com.cn

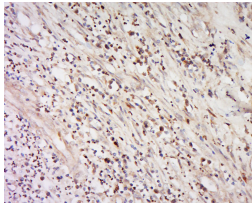
techsupport@bioss.com.cn

400-901-9800

— DATASHEET —

Host: Rabbit	Isotype: IgG	Applications: IHC-P (1:100-500) IHC-F (1:100-500) IF (1:100-500) Reactivity: Human Predicted MW.: 19 kDa Subcellular Location: Secreted
Clonality: Polyclonal		
GeneID: 3449	SWISS: P05015	
Target: IFNA16/Interferon alpha 16		
Immunogen: KLH conjugated synthetic peptide derived from human IFNA16: 101-189/189.		
Purification: affinity purified by Protein A		
Concentration: 1mg/ml		
Storage: 0.01M TBS (pH7.4) with 1% BSA, 0.02% Proclin300 and 50% Glycerol. Shipped at 4°C. Store at -20°C for one year. Avoid repeated freeze/thaw cycles.		
Background: IFNA16 is produced by macrophages and has antiviral activities. Interferon stimulates the production of two enzymes: a protein kinase and an oligoadenylate synthetase.		

— VALIDATION IMAGES —



Tissue/cell: human cervical carcinoma; 4% Paraformaldehyde-fixed and paraffin-embedded; Antigen retrieval: citrate buffer (0.01M, pH 6.0), Boiling bathing for 15min; Block endogenous peroxidase by 3% Hydrogen peroxide for 30min; Blocking buffer (normal goat serum,C-0005) at 37°C for 20 min; Incubation: Anti-IFNA16/Interferon alpha 16 Polyclonal Antibody, Unconjugated(bs-6330R) 1:500, overnight at 4°C, followed by conjugation to the secondary antibody(SP-0023) and DAB(C-0010) staining