

KLHL20 Rabbit pAb

Catalog Number: bs-7515R

Target Protein: KLHL20

Concentration: 1mg/ml

Form: Liquid

Host: Rabbit

Clonality: Polyclonal

Isotype: IgG

Applications: **IHC-P** (1:100-500), **IHC-F** (1:100-500), **IF** (1:100-500)

Reactivity: Rat (predicted: Human, Mouse, Rabbit, Sheep, Cow, Chicken)

Predicted MW: 68 kDa

Subcellular Cytoplasm ,Nucleus

Locations:

Entrez Gene: 27252

Swiss Prot: Q9Y2M5

Source: KLH conjugated synthetic peptide derived from human KLHL20: 13-100/609.

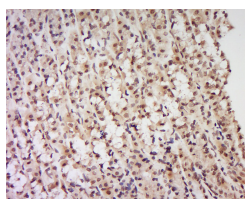
Purification: affinity purified by Protein A

Storage: 0.01M TBS (pH7.4) with 1% BSA, 0.02% Proclin300 and 50% Glycerol.

Shipped at 4°C. Store at -20°C for one year. Avoid repeated freeze/thaw cycles.

Background: Substrate-specific adapter of a BCR (BTB-CUL3-RBX1) E3 ubiquitin-protein ligase complex involved in interferon response. The BCR(KLHL20) E3 ubiquitin ligase complex mediates the ubiquitination of DAPK1, leading to its degradation by the proteasome, thereby acting as a negative regulator of apoptosis. Also acts as a regulator of endothelial migration during angiogenesis by controlling the activation of Rho GTPases.

VALIDATION IMAGES



Tissue/cell: Rat stomach tissue; 4% Paraformaldehyde-fixed and paraffin-embedded; Antigen retrieval: citrate buffer (0.01M, pH 6.0), Boiling bathing for 15min; Block endogenous peroxidase by 3% Hydrogen peroxide for 30min; Blocking buffer (normal goat serum,C-0005) at 37°C for 20 min; Incubation: Anti-KLHL20 Polyclonal Antibody, Unconjugated(bs-7515R) 1:200, overnight at 4°C, followed by conjugation to the secondary antibody(SP-0023) and DAB(C-0010) staining