

bs-21341R**[Primary Antibody]****TIMP-2 Rabbit pAb****BioSS**
ANTIBODIES

www.bioss.com.cn

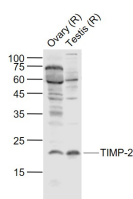
sales@bioss.com.cn

techsupport@bioss.com.cn

400-901-9800

— DATASHEET —**Host:** Rabbit**Isotype:** IgG**Applications:** WB (1:500-2000)**Clonality:** Polyclonal**GenelD:** 7077**Target:** TIMP-2**Immunogen:** KLH conjugated synthetic peptide derived from human TIMP-2: 141-220/220.**Purification:** affinity purified by Protein A**Concentration:** 1mg/ml**Storage:** 0.01M TBS (pH7.4) with 1% BSA, 0.02% Proclin300 and 50% Glycerol.

Shipped at 4°C. Store at -20°C for one year. Avoid repeated freeze/thaw cycles.

Background: This gene is a member of the TIMP gene family. The proteins encoded by this gene family are natural inhibitors of the matrix metalloproteinases, a group of peptidases involved in degradation of the extracellular matrix. In addition to an inhibitory role against metalloproteinases, the encoded protein has a unique role among TIMP family members in its ability to directly suppress the proliferation of endothelial cells. As a result, the encoded protein may be critical to the maintenance of tissue homeostasis by suppressing the proliferation of quiescent tissues in response to angiogenic factors, and by inhibiting protease activity in tissues undergoing remodelling of the extracellular matrix. [provided by RefSeq, Jul 2008].**Reactivity:** Rat (predicted: Human, Mouse, Pig, Cow, Dog, Horse)**Predicted MW:** 24 kDa**Subcellular Location:** Secreted**— VALIDATION IMAGES —**

Sample: Lane 1: Ovary (Rat) Lysate at 40 ug Lane

2: Testis (Rat) Lysate at 40 ug Primary: Anti-TIMP-2 (bs-21341R) at 1/1000 dilution

Secondary: IRDye800CW Goat Anti-Rabbit IgG at 1/20000 dilution Predicted band size: 22 kD

Observed band size: 22 kD