

bs-24255R

[Primary Antibody]

SFTPA1 Rabbit pAb

Bioss
ANTIBODIES

www.bioss.com.cn

sales@bioss.com.cn

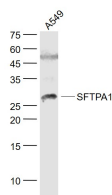
techsupport@bioss.com.cn

400-901-9800

— DATASHEET —

Host: Rabbit	Isotype: IgG	Applications: WB (1:500-2000)
Clonality: Polyclonal		Reactivity: Human (predicted: Mouse, Rat)
Target: SFTPA1		Predicted MW.: 25 kDa
Immunogen: KLH conjugated synthetic peptide derived from mouse SFTPA1: 101-200/248.		Subcellular Location: Secreted ,Extracellular
Purification: affinity purified by Protein A		Location: matrix
Concentration: 1mg/ml		
Storage: Size : 50ul/100ul/200ul 0.01M TBS (pH7.4) with 1% BSA, 0.02% Proclin300 and 50% Glycerol. Shipped at 4°C. Store at -20°C for one year. Avoid repeated freeze/thaw cycles.		
Background: This gene is one of several genes encoding pulmonary-surfactant associated proteins (SFTPA) located on chromosome 10. Mutations in this gene and a highly similar gene located nearby, which affect the highly conserved carbohydrate recognition domain, are associated with idiopathic pulmonary fibrosis. The current version of the assembly displays only a single centromeric SFTPA gene pair rather than the two gene pairs shown in the previous assembly which were thought to have resulted from a duplication. [provided by RefSeq, Sep 2009]		

— VALIDATION IMAGES —



Sample: A549(Human) Cell Lysate at 30 ug
Primary: Anti- SFTPA1 (bs-24255R) at 1/1000
dilution Secondary: IRDye800CW Goat Anti-
Rabbit IgG at 1/20000 dilution Predicted band
size: 25 kD Observed band size: 26 kD