

**bs-10574R****[ Primary Antibody ]****Bioss**  
ANTIBODIES

www.bioss.com.cn

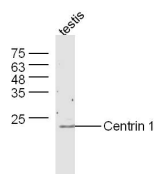
sales@bioss.com.cn

techsupport@bioss.com.cn

400-901-9800

**Centrin 1 Rabbit pAb****— DATASHEET —**

<b>Host:</b> Rabbit	<b>Isotype:</b> IgG	<b>Applications:</b> WB (1:500-2000)
<b>Clonality:</b> Polyclonal		<b>Reactivity:</b> Mouse (predicted: Human, Rat, Dog, Horse)
<b>GeneID:</b> 1068	<b>SWISS:</b> Q12798	
<b>Target:</b> Centrin 1		<b>Predicted MW.:</b> 20 kDa
<b>Immunogen:</b> KLH conjugated synthetic peptide derived from human Centrin 1: 21-120/172.		<b>Subcellular Location:</b> Cell membrane
<b>Purification:</b> affinity purified by Protein A		
<b>Concentration:</b> 1mg/ml		
<b>Storage:</b> 0.01M TBS (pH7.4) with 1% BSA, 0.02% Proclin300 and 50% Glycerol. Shipped at 4°C. Store at -20°C for one year. Avoid repeated freeze/thaw cycles.		
<b>Background:</b> C4orf32 is a 132 amino acid single pass membrane protein that is encoded by a gene that maps to human chromosome 4. Human chromosome 4 represents approximately 6% of the human genome and contains nearly 900 genes. Notably, the Huntingtin gene, which is found to encode an expanded glutamine tract in cases of Huntington's disease, is located on chromosome 4. FGFR-3 is also encoded by a gene that maps to human chromosome 4 and has been associated with thanatophoric dwarfism, achondroplasia, Muenke syndrome and bladder cancer. Chromosome 4 is also tied to Ellis-van Creveld syndrome, methylmalonic acidemia and polycystic kidney disease.		

**— VALIDATION IMAGES —**

Sample: testis (Mouse) Lysate at 40 ug Primary:

Anti-Centrin 1(bs-10574R) at 1/300 dilution

Secondary: IRDye800CW Goat Anti-Rabbit IgG at

1/20000 dilution Predicted band size: 20 kD

Observed band size: 20 kD