

**bs-14063R****[ Primary Antibody ]****Bioss**  
ANTIBODIES

www.bioss.com.cn

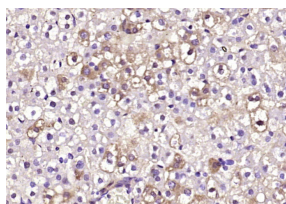
sales@bioss.com.cn

techsupport@bioss.com.cn

400-901-9800

**CRLS1 Rabbit pAb****— DATASHEET —**

<b>Host:</b> Rabbit	<b>Isotype:</b> IgG	<b>Applications:</b> IHC-P (1:100-500) IHC-F (1:100-500) IF (1:100-500)  <b>Reactivity:</b> Rat (predicted: Human, Mouse, Pig, Cow, Chicken, Dog, Horse)  <b>Predicted MW.:</b> 33 kDa  <b>Subcellular Location:</b> Cytoplasm
<b>Clonality:</b> Polyclonal		
<b>GeneID:</b> 54675	<b>SWISS:</b> Q9UJA2	
<b>Target:</b> CRLS1		
<b>Immunogen:</b> KLH conjugated synthetic peptide derived from human CRLS1: 201-301/301.		
<b>Purification:</b> affinity purified by Protein A		
<b>Concentration:</b> 1mg/ml		
<b>Storage:</b> 0.01M TBS (pH7.4) with 1% BSA, 0.02% Proclin300 and 50% Glycerol. Shipped at 4°C. Store at -20°C for one year. Avoid repeated freeze/thaw cycles.		
<b>Background:</b> Cardiolipin synthetase is a mitochondrial protein that belongs to the CDP-alcohol phosphatidyltransferase class-I family. CLS1 is a multi-pass membrane protein localized to the inner membrane of mitochondria. CLS1 is responsible for the catalyzing the reversible transfer of a phosphatidyl group from one phosphatidyl glycerol molecule to another. This process results in the formation of cardiolipin (CL, or diphosphatidyl glycerol) and glycerol. Diphosphatidyl glycerol is a major component of the mitochondrial membrane and constitutes roughly 20% of total mitochondrial lipids. Having four fatty acid tails rather than the usual two, CL is a double phospholipid that is synthesized in the mitochondrion itself. Defects in the CRLS1 gene are likely to effect metabolism, sustained production of ATP and could contribute to diseases such as Barth syndrome.		

**— VALIDATION IMAGES —**

Paraformaldehyde-fixed, paraffin embedded (rat liver); Antigen retrieval by boiling in sodium citrate buffer (pH6.0) for 15min; Block endogenous peroxidase by 3% hydrogen peroxide for 20 minutes; Blocking buffer (normal goat serum) at 37°C for 30min; Antibody incubation with (CRLS1) Polyclonal Antibody, Unconjugated (bs-14063R) at 1:200 overnight at 4°C, followed by operating according to SP Kit(Rabbit) (sp-0023) instructions and DAB staining.