

bs-14062R

[Primary Antibody]

CRLF3 Rabbit pAb

Bioss
ANTIBODIES

www.bioss.com.cn

sales@bioss.com.cn

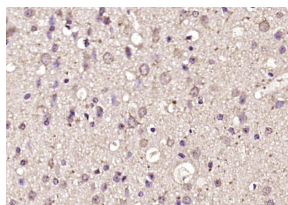
techsupport@bioss.com.cn

400-901-9800

— DATASHEET —

<p>Host: Rabbit</p> <p>Clonality: Polyclonal</p> <p>GeneID: 51379</p> <p>Target: CRLF3</p> <p>Immunogen: KLH conjugated synthetic peptide derived from human CRLF3: 21-120/442.</p> <p>Purification: affinity purified by Protein A</p> <p>Concentration: 1mg/ml</p> <p>Storage: 0.01M TBS (pH7.4) with 1% BSA, 0.02% Proclin300 and 50% Glycerol. Shipped at 4°C. Store at -20°C for one year. Avoid repeated freeze/thaw cycles.</p> <p>Background: This gene encodes a cytokine receptor-like factor that may negatively regulate cell cycle progression at the G0/G1 phase. Studies of the related rat protein suggest that it may regulate neuronal morphology and synaptic vesicle biogenesis. This gene is one of several genes located in the neurofibromatosis type 1 tumor suppressor region on the q arm of chromosome 17, a region that is subject to microdeletions, duplications, chromosomal breaks and rearrangements. Alternative splicing of this gene results in multiple transcript variants. Related pseudogenes have been identified on chromosomes 2 and 5. [provided by RefSeq, Aug 2012]</p>	<p>Isotype: IgG</p> <p>SWISS: Q8IU18</p>	<p>Applications: IHC-P (1:100-500) IHC-F (1:100-500) IF (1:100-500)</p> <p>Reactivity: Mouse (predicted: Human, Rat, Rabbit, Cow, Dog)</p> <p>Predicted MW.: 50 kDa</p> <p>Subcellular Location: Cytoplasm</p>
--	--	--

— VALIDATION IMAGES —



Paraformaldehyde-fixed, paraffin embedded (mouse brain); Antigen retrieval by boiling in sodium citrate buffer (pH6.0) for 15min; Block endogenous peroxidase by 3% hydrogen peroxide for 20 minutes; Blocking buffer (normal goat serum) at 37°C for 30min; Antibody incubation with (CRLF3) Polyclonal Antibody, Unconjugated (bs-14062R) at 1:200 overnight at 4°C, followed by operating according to SP Kit(Rabbit) (sp-0023) instructions and DAB staining.