

bs-14057R

[Primary Antibody]

CRIP2 Rabbit pAb

BioSS
ANTIBODIES

www.bioss.com.cn

sales@bioss.com.cn

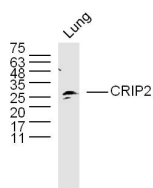
techsupport@bioss.com.cn

400-901-9800

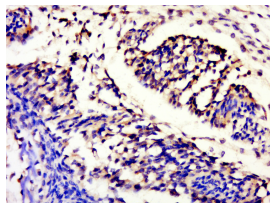
— DATASHEET —

Host: Rabbit	Isotype: IgG	Applications: WB (1:500-2000) IHC-P (1:100-500) IHC-F (1:100-500) IF (1:100-500)
Clonality: Polyclonal		
GeneID: 1397	SWISS: P52943	
Target: CRIP2		
Immunogen: KLH conjugated synthetic peptide derived from human CRIP2: 17-120/208.		
Purification: affinity purified by Protein A		Reactivity: Mouse (predicted: Human, Rat, Horse)
Concentration: 1mg/ml		Predicted MW.: 22 kDa
Storage: 0.01M TBS (pH7.4) with 1% BSA, 0.02% Proclin300 and 50% Glycerol. Shipped at 4°C. Store at -20°C for one year. Avoid repeated freeze/thaw cycles.		Subcellular Location: Nucleus
Background: This gene encodes a putative transcription factor with two LIM zinc-binding domains. The encoded protein may participate in the differentiation of smooth muscle tissue. Alternative splicing results in multiple transcript variants. [provided by RefSeq, Aug 2012]		

— VALIDATION IMAGES —



Sample: lung (mouse) Lysate at 40 ug Primary:
Anti-CRIP2(bs-14057R) at 1/300 dilution
Secondary: IRDye800CW Goat Anti-Rabbit IgG at
1/20000 dilution Predicted band size: 22 kD
Observed band size: 30 kD



Paraformaldehyde-fixed, paraffin embedded
(mouse embryo); Antigen retrieval by boiling in
sodium citrate buffer (pH6.0) for 15min; Block
endogenous peroxidase by 3% hydrogen
peroxide for 20 minutes; Blocking buffer (normal
goat serum) at 37°C for 30min; Antibody
incubation with (CRIP2) Polyclonal Antibody,
Unconjugated (bs-14057R) at 1:500 overnight at
4°C, followed by a conjugated secondary
(sp-0023) for 20 minutes and DAB staining.