

bs-14051R**[Primary Antibody]****CREB3L1 Rabbit pAb****Bioss**
ANTIBODIES

www.bioss.com.cn

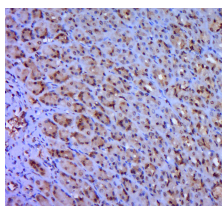
sales@bioss.com.cn

techsupport@bioss.com.cn

400-901-9800

— DATASHEET —

Host: Rabbit	Isotype: IgG	Applications: IHC-P (1:100-500)
Clonality: Polyclonal		IHC-F (1:100-500)
GeneID: 90993	SWISS: Q96BA8	IF (1:100-500)
Target: CREB3L1		Reactivity: Rat (predicted: Human, Mouse, Cow, Dog, Horse)
Immunogen: KLH conjugated synthetic peptide derived from human CREB3L1: 251-350/519.		
Purification: affinity purified by Protein A		Predicted MW.: 57 kDa
Concentration: 1mg/ml		Subcellular Location: Nucleus
Storage: 0.01M TBS (pH7.4) with 1% BSA, 0.02% Proclin300 and 50% Glycerol. Shipped at 4°C. Store at -20°C for one year. Avoid repeated freeze/thaw cycles.		
Background: The protein encoded by this gene is normally found in the membrane of the endoplasmic reticulum (ER). However, upon stress to the ER, the encoded protein is cleaved and the released cytoplasmic transcription factor domain translocates to the nucleus. There it activates the transcription of target genes by binding to box-B elements. [provided by RefSeq, Jun 2013]		

— VALIDATION IMAGES —

Paraformaldehyde-fixed, paraffin embedded (rat stomach tissue); Antigen retrieval by boiling in sodium citrate buffer (pH6.0) for 15min; Block endogenous peroxidase by 3% hydrogen peroxide for 20 minutes; Blocking buffer (normal goat serum) at 37°C for 30min; Antibody incubation with (CREB3L1) Polyclonal Antibody, Unconjugated (bs-14051R) at 1:400 overnight at 4°C, followed by a conjugated secondary (sp-0024) for 20 minutes and DAB staining.